



RNA timestamps identify the age of single molecules in RNA sequencing

Samuel G. Rodrigues^{1,2,3,13}, Linlin M. Chen^{3,13}, Sophia Liu^{4,5}, Ellen D. Zhong⁶, Joseph R. Scherrer¹, Edward S. Boyden^{2,7,8,9,10,11,14} and Fei Chen^{3,12,14}

Current approaches to single-cell RNA sequencing (RNA-seq) provide only limited information about the dynamics of gene expression. Here we present RNA timestamps, a method for inferring the age of individual RNAs in RNA-seq data by exploiting RNA editing. To introduce timestamps, we tag RNA with a reporter motif consisting of multiple MS2 binding sites that recruit the adenosine deaminase ADAR2 fused to an MS2 capsid protein. ADAR2 binding to tagged RNA causes A-to-I edits to accumulate over time, allowing the age of the RNA to be inferred with hour-scale accuracy. By combining observations of multiple timestamped RNAs driven by the same promoter, we can determine when the promoter was active. We demonstrate that the system can infer the presence and timing of multiple past transcriptional events. Finally, we apply the method to cluster single cells according to the timing of past transcriptional activity. RNA timestamps will allow the incorporation of temporal information into RNA-seq workflows.

Rapid progress in RNA-seq technologies and, in particular, single-cell RNA-seq has enabled detailed molecular characterization of complex tissues. However, because sequencing is a destructive measurement, these approaches provide only an instantaneous snapshot of cellular state, and comparatively little work has been done to examine how cell states arise from complex transcriptional dynamics over timescales of hours. Efforts to add a temporal dimension to RNA-seq through metabolic labeling of newly synthesized RNAs^{1–4}, or computational inference from the abundance of unspliced transcripts⁵, provide only the derivative of expression level or information about expression at a single timepoint, so transcriptional histories must still be reconstructed by observations of many cells. To overcome these challenges, we asked whether it might be possible to estimate the age of each individual RNA made by a promoter, eventually allowing us to build up a picture of the transcriptional history of a single cell from the ensemble of RNAs present in the cell.

To that end, we designed a recorder RNA motif, referred to as an RNA timestamp, that reports its age via the gradual accumulation of A-to-I edits caused by an engineered version of the human adenosine deaminase acting on RNA 2 catalytic domain (ADAR2cd; Fig. 1a). This catalytic domain has been shown to be targetable to specific RNAs via fusion to exogenous RNA-binding domains, with

minimal off-target activity to untargeted RNAs^{6–10}. We designed the timestamps to be arrays of adenosine-rich sequences that are favored substrates of the ADAR enzyme^{11–13} (Fig. 1b). Edits in this region can subsequently be identified as A-to-G mutations in high-throughput sequencing of the timestamps. ADAR2cd is specifically targeted to MS2 binding sites in the editing region of the timestamps through a fusion with the MS2 capsid protein (MCP)¹⁴. We screened multiple RNA and ADAR variants and selected a pair with an editing timescale on the order of hours, a timescale relevant for endogenous transcriptional activity (Supplementary Fig. 1).

To calibrate our system, we incubated HEK293T cells expressing the ADAR variant and a timestamped RNA under the control of the tetracycline response element (TRE) in medium containing doxycycline for 1 h. The timestamp was placed in the 3' untranslated region (UTR) of a fluorescent protein-encoding messenger RNA (mRNA)¹⁵, which shows minimal degradation over the course of 12 h in mammalian cells (Supplementary Fig. 2). We subsequently added actinomycin D, an RNA transcription inhibitor¹⁶, and then lysed the cells after a variable amount of time before sequencing the timestamps (Fig. 1c). Each of these experiments provided us with a population of RNAs with a known age (± 30 min), and we observed that the timestamps became progressively more heavily edited over time (Fig. 1d). The mean number of edits per timestamp at any given timepoint was highly reproducible between biological replicates (Fig. 1e), and the accumulation of edits over time could be modeled accurately using a Poisson binomial model (Supplementary Fig. 3). Using the empirical distribution of the number of edits per timestamp, we found that it was possible to estimate the age of a timestamped mRNA transcript purely from the total number of edits on the timestamp with a 95% confidence interval of 2.7 ± 0.4 h (mean \pm s.d., $n = 26$ confidence intervals each derived for timestamps with a different number of edits; Fig. 1f). We, hereafter, refer to the distributions of edits per RNA obtained from these single-hour induction experiments as 'single-hour editing distributions'. Because cells will often contain many copies of a given RNA transcript, we reasoned that we might be able to infer the underlying transcriptional dynamics of a specific promoter by analyzing the ensemble of timestamped RNAs produced by the promoter. To test this, we built an algorithm that infers, without any assumptions, the transcriptional program that is most consistent with a particular

¹Department of Physics, Massachusetts Institute of Technology, Cambridge, MA, USA. ²Department of Media Arts and Sciences, Massachusetts Institute of Technology, Cambridge, MA, USA. ³Broad Institute of Harvard and MIT, Cambridge, MA, USA. ⁴Biophysics Program, Harvard University, Boston, MA, USA. ⁵Harvard-MIT Division of Health Sciences and Technology, Massachusetts Institute of Technology, Cambridge, MA, USA. ⁶Computational and Systems Biology, Massachusetts Institute of Technology, Cambridge, MA, USA. ⁷Department of Biological Engineering, Massachusetts Institute of Technology, Cambridge, MA, USA. ⁸Department of Brain and Cognitive Sciences, Massachusetts Institute of Technology, Cambridge, MA, USA. ⁹MIT McGovern Institute, Massachusetts Institute of Technology, Cambridge, MA, USA. ¹⁰Koch Institute, Massachusetts Institute of Technology, Cambridge, MA, USA. ¹¹Howard Hughes Medical Institute, Cambridge, MA, USA. ¹²Department of Stem Cell and Regenerative Biology, Harvard University, Cambridge, MA, USA. ¹³These authors contributed equally: Samuel G. Rodrigues, Linlin M. Chen. ¹⁴These authors jointly directed this work: Edward S. Boyden, Fei Chen. ✉e-mail: edboyden@mit.edu; chenf@broadinstitute.org

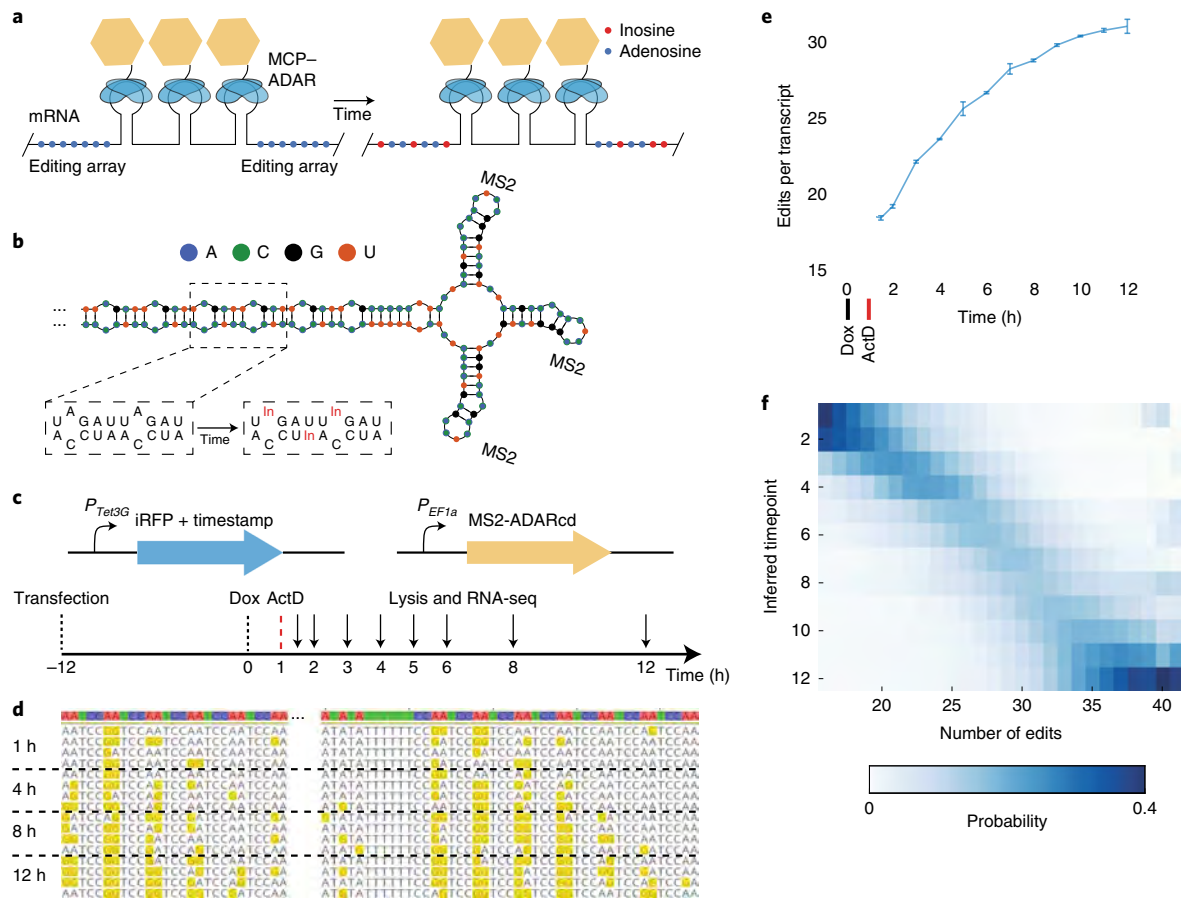


Fig. 1 | Encoding of temporal information through RNA edits. **a**, Schematic of the timestamps approach, consisting of editing arrays of adenosines (blue dots) and several MS2 stem loops in the 3' UTR of an mRNA. In the presence of an MCP-ADAR fusion (MCP, blue ellipses; ADAR, yellow hexagon), timestamps are edited over time by catalytic conversion of adenosine to inosine (red dots). **b**, A schematic structure of a portion of one timestamp, showing MS2 stem loops and the repetitive, double-stranded RNA motif that serves as the editing substrate. **c**, Schematic representation of the Tet-responsive timestamped mRNA system and experimental timeline. **d**, Examples of timestamps edited for different amounts of time, showing the accumulation of A-to-I edits. **e**, The mean number of edits per timestamp observed after editing for different amounts of time. Data are represented as mean \pm s.d. ($n=3$ biological replicates). **f**, The number of edits per timestamp is shown for different specified ages. Columns are normalized to 1. Each column can be interpreted as a probability distribution of when a timestamped RNA with a given number of edits is likely to have been made.

set of timestamps (Methods). By ‘transcriptional program’, we mean the function that describes the number of timestamps generated as a function of time. We represent each transcriptional program in a discretized and normalized form as a set of 12 positive values that sum to 1, with each value representing the fraction of RNAs generated in a different 1-h window. The algorithm infers transcriptional programs by using gradient descent to identify a convex combination of single-hour editing distributions that minimizes the L2 norm between the observed editing distribution and the editing distribution associated with the convex combination (Fig. 2a). The weights that describe the optimal convex combination are, thus, the inferred transcriptional program. We applied the algorithm to sets of timestamped RNAs that were all chosen randomly from the same timepoint and found that it could infer both that the sets came from a single timepoint and which timepoint they came from, with accuracy that increased monotonically with the number of RNAs in the set (Fig. 2b). Consistent with our hypothesis that temporal estimates based on multiple RNAs would be more accurate than temporal estimates based on a single RNA, the temporal error associated with a set of only four RNAs was 1.49 ± 0.42 h (mean \pm s.d., $n=12$ timepoints; Methods) and declined monotonically with increasing numbers of RNAs (Fig. 2c). For sets of at least 50 RNAs,^{17,18} the algorithm reproduced weight distributions that clearly resembled the

single-hour transcriptional programs from which the RNAs were derived (Fig. 2d).

Because each RNA is individually timestamped, we reasoned that the algorithm might be able to identify if a given set of timestamped RNA was produced by multiple, temporally distinct transcriptional pulses. To test this, we computationally generated mixtures of RNAs drawn half from the 1-h timepoint and half from the 5-h timepoint and applied the gradient descent algorithm to infer the transcriptional program most likely to have generated the mixtures (Fig. 3a). Even with only ten RNAs, we were able to identify the presence of two peaks in the transcriptional program $51.3\% \pm 7.6\%$ of the time, and this increased to $86\% \pm 13\%$ with 200 RNAs (mean \pm s.d., $n=3$ biological samples; Fig. 3b and Methods). To validate these predictions experimentally, we transfected cells with barcoded RNAs driven by a doxycycline-sensitive promoter and a light-sensitive transcription factor¹⁹. Timestamped RNAs associated with each promoter could be identified by promoter-specific barcodes, allowing for independent reconstruction of light- and doxycycline-induced timestamp editing distributions (Supplementary Fig. 4). Independently stimulating the cells with each promoter at two different times (at 1 h and 5 h) led to an editing distribution with two clear peaks corresponding to the two transcriptional events (Fig. 3c). We then subsampled the timestamped RNAs from this experiment (Fig. 3d) and

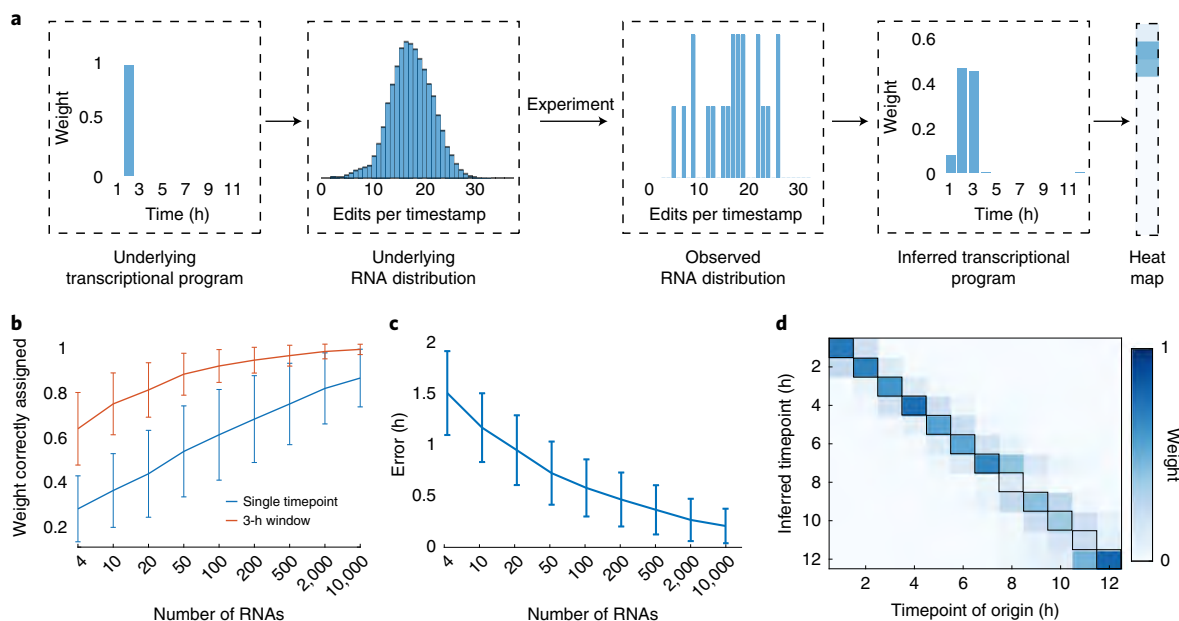


Fig. 2 | Timestamped RNAs can reveal temporal transcription programs. **a**, Schematic of the gradient descent algorithm. RNAs are generated by an unknown underlying transcriptional program (for example, a transcriptional event that occurred 2 h before lysis (left)), which corresponds to an underlying distribution of edits per timestamp (middle left). In any individual experiment, one observes a set of timestamped RNAs sampled from the underlying distribution (middle right). The gradient descent algorithm produces an inferred transcriptional program (right) that best approximates the observed RNA distribution under the L2 norm. Transcriptional programs can then be represented as columns in a heat map (far right). **b**, For sets of timestamped RNAs drawn from a single timepoint, the fraction assigned by the algorithm to the correct timepoint (blue) or the correct 3-h window (orange) as a function of the number of RNAs in the set ($n = 12$ timepoints). **c**, The temporal error associated with the reconstructed transcriptional programs, as a function of the number of RNAs in the set (Methods). **d**, The average weight assigned by the gradient descent algorithm to each timepoint (y axis) is shown as a function of the timepoint of origin (x axis), for sets of 50 RNAs. Columns sum to 1. Error bars represent mean \pm s.d. for **b** and **c**.

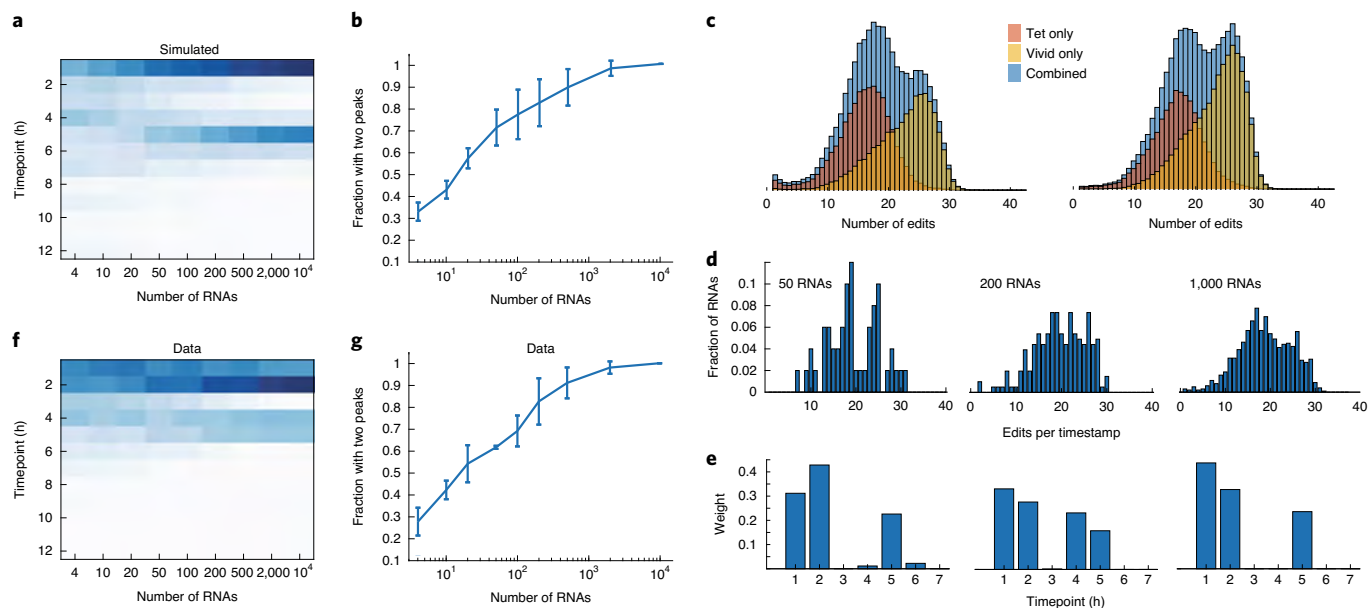


Fig. 3 | Identification of temporally separated transcriptional events. **a**, The average weight assigned by the gradient descent algorithm to each timepoint for sets of timestamped RNAs that were drawn randomly (in equal proportion) from the 1- and 5-h timepoints as a function of number of RNAs drawn. Columns sum to 1. **b**, The percentage of sets of RNA in which two peaks can be identified by the gradient descent algorithm (Methods). Error bars show mean \pm s.d., $n = 3$ data sets from biological replicates. **c**, Histograms of the number of edits per timestamp are shown for cells that were induced separately with a light-sensitive promoter and a doxycycline-sensitive promoter. Red shows the distribution of edits per RNA for RNAs transcribed off the doxycycline promoter, whereas yellow shows the light-sensitive promoter. Blue shows the combined distribution. Columns show two biological replicates. **d**, Distributions of edits per timestamp for sets of RNAs chosen randomly from the blue distribution in **c**. **e**, The weight distribution inferred by the gradient descent algorithm for the set of RNAs shown in **d**. **f**, Same as **a** but for sets of RNA drawn from the experimental distributions in **c**. **g**, Same as **b** but for sets of RNA drawn from the experimental distributions in **c**. Error bars show mean \pm s.d., $n = 2$ biological replicates.

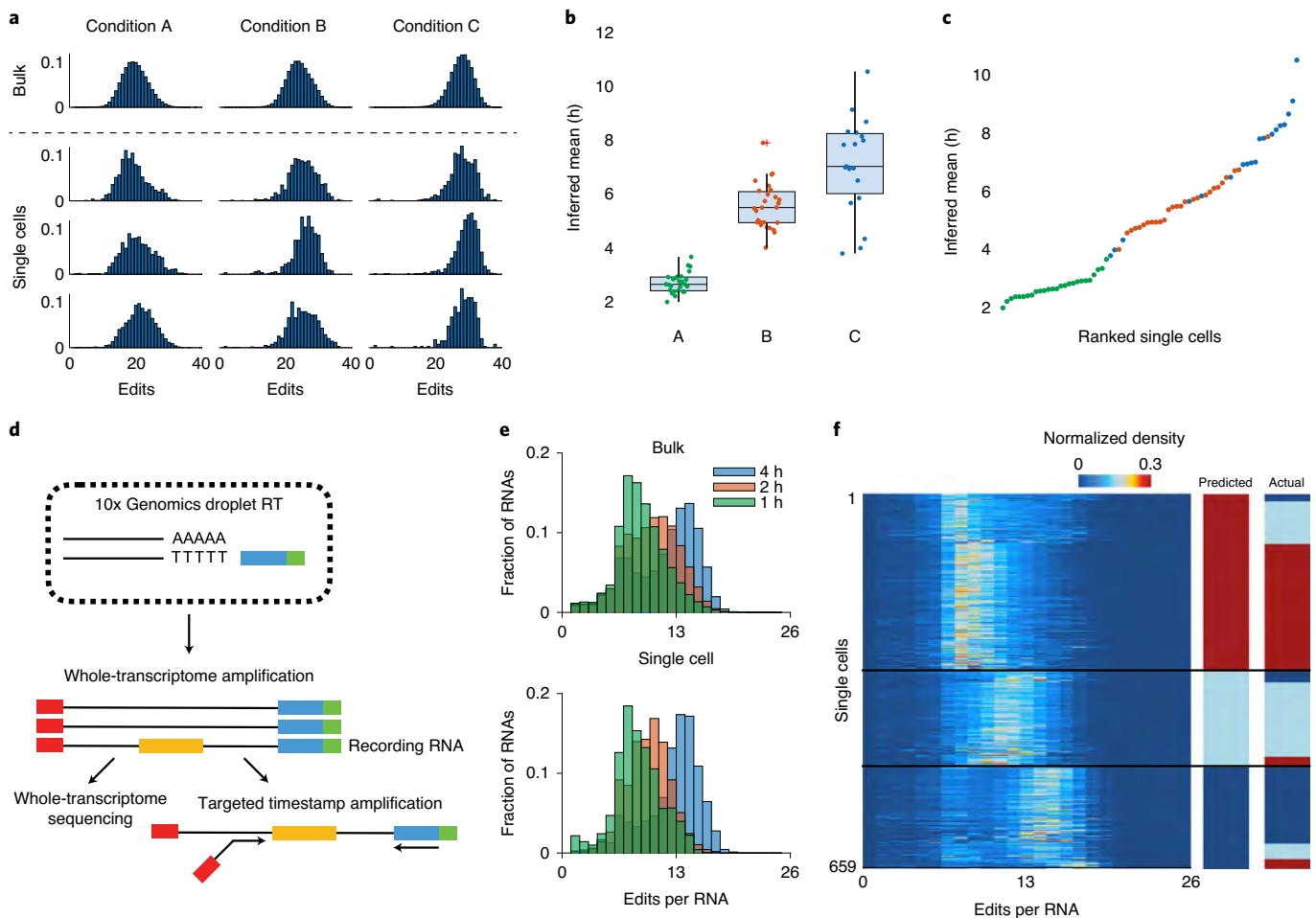


Fig. 4 | Timestamps can reveal transcriptional programs in single cells. All editing histograms are normalized to sum to 1. **a**, Editing histograms for bulk conditions A through C (top) and randomly chosen single cells (bottom). **b**, Predicted induction times for all single cells in the experiment, calculated as the center of mass of the inferred weight distributions ($n=24$ for condition A, $n=27$ for condition B and $n=19$ for condition C). For the box plot, the middle line is the median, and the lower and upper hinges correspond to the first and third quartiles. Whiskers extend to the largest value no further than $1.5\times$ IQR from the hinge. The lower whisker extends from the hinge to the smallest value at most $1.5\times$ IQR of the hinge, whereas data beyond the end of the whiskers are outlying points that are plotted individually. **c**, The predicted induction time for each single cell, ranked from least to greatest. Green dots correspond to condition A; red dots correspond to condition B; and blue dots correspond to condition C. **d**, Schematic of capture and sequencing of timestamps with 10x single-cell sequencing in conjunction with transcriptomic profiling. **e**, Top, editing histograms for bulk sequencing of 1-h induction events 1, 2 and 4 h before lysis. Bottom, three representative single cells for 1-, 2- and 4-h induction conditions. **f**, Heat map of distribution of edits per cell for 659 cells. Cells are clustered by k -means according to their editing distribution into three clusters corresponding to predicted induction. 'Actual' column shows grouping of cells by condition, determined using a condition barcode on the timestamp reads (red, 1 h; light blue, 2 h; and dark blue, 4 h). IQR, interquartile range.

ran the gradient descent algorithm to generate putative transcriptional programs (Fig. 3e). Even though this was a more challenging task, because the RNAs were not chosen evenly from the two peaks, the results we obtained were very similar to the results obtained in our simulations (Fig. 3f). With ten RNAs, two peaks could be distinguished $44.5\pm 0.7\%$ of the time, and this increased to $90.5\pm 0.7\%$ with 200 RNAs (mean \pm s.d., $n=2$ biological samples; Fig. 3g). We have also shown that timestamps can be used in primary hippocampal neuron culture to infer the c-fos response from KCl activation of neural activity (Supplementary Fig. 5). The testing context for our technology—that is, a plasmid-based reporter system and a cultured neuron system—had high levels of Fos activity in the absence of KCl stimulation but demonstrates that this technology might enable temporally resolved, sequencing-based readout of neural activity. Given the performance of the timestamp system with relatively few RNAs, we asked whether it could be applied to determine the timing of transcriptional events in individual cells.

We transfected cells with timestamped RNAs under the control of TRE, induced with doxycycline, and then induced the cells according to three different single-hour induction protocols (Methods). Individual cells were then sorted into wells of a 96-well plate, and we subsequently performed single-cell timestamp sequencing (Fig. 4a). Analysis of the editing histograms yielded a mean induction time associated with each cell (Methods). The estimation error in the temporal estimate for the single cells in the single-hour induction protocols were 0.2 ± 0.8 h (mean \pm s.d., $n=27$) for one condition and 0.5 ± 1.0 h (mean \pm s.d., $n=19$) for the other (Fig. 4b and Methods). Based on these temporal estimates, we were able to order the cells according to the timing of transcriptional events, obtaining only five transpositions out of 72 cells, an accuracy rate of 86% (Fig. 4c).

Recent advances in droplet-based barcoding technologies have enabled the scalable molecular profiling of cells and tissues at the single-cell level^{20,21}. Thus, we asked if we could read out timestamps

with 10x single-cell 3' RNA-seq in combination with paired transcriptomic information. To do so, we developed a molecular biology workflow that enables targeted amplification of timestamps from single-cell barcoded whole-transcriptome amplification products (Methods and Fig. 4d). This allows for both the timestamps and the cell barcode to be read out via paired-end Illumina sequencing. We transfected HEK cells with the barcoded TRE timestamp systems and induced with doxycycline 1, 2 or 4 h before 10x droplet-based sequencing. Single-cell timestamp recordings measured via 10x sequencing is qualitatively similar to bulk sequencing from the same conditions (Fig. 4e). After filtering for high-quality cells, we performed *k*-means clustering on the timestamps and found three distinct clusters (659 cells, ~85% of cells) corresponding to the 1-, 2- and 4-h inductions (the other 32% corresponded to cells with few edits, potentially without ADAR). Examining these 659 cells, we found that 494 of 659 (~75%) of these cells were assigned to the correct induction condition (Fig. 4f). These results demonstrate that timestamps can be read out in concert with high-throughput single-cell droplet-based methods.

Inferring temporal information from RNA-seq has many distinct advantages: unlike in the case of fluorescent reporter proteins, temporal information can be inferred without direct observation of the cells in situ, and temporal information can be combined with information about cell type through RNA-seq. Several new sequencing technologies have recently added a temporal dimension to RNA-seq—for example, by metabolically labeling newly synthesized RNAs^{1–4} or by inferring the instantaneous change in cell state from the abundance of unspliced transcripts. However, these existing tools for inferring temporal information from RNA-seq provide only one-dimensional data: metabolic labeling identifies only RNA made within one specific window, whereas splicing-based techniques identify only the instantaneous derivative of the cell state. In both cases, complex cellular dynamics must, therefore, be inferred from measurements on many cells, and cellular heterogeneity can be lost. On the other hand, several recently published methods have succeeded in recording cell-state information into the sequence of DNA in living cells^{22–32}, but all such methods operate on timescales of days and are, thus, insufficient for recording transcriptional responses to perturbations, which typically take place over hours. RNA timestamps are, thus, the first technology that can record high-dimensional temporal information from individual cells on timescales relevant for understanding complex cellular transcriptional activity.

Here we reported that the continuous enzymatic activity of adenosine deaminases acting on RNA can allow for direct inference of the age of individual RNAs and that statistical methods taking advantage of this phenomenon can reveal the temporal aspect of transcriptional dynamics in individual cells. In general, the inference algorithm that we present can reveal the absolute timing of transcriptional events provided a set of single-hour editing distributions, which serve as a calibration set. However, important caveats remain. For example, simulations suggest that more complex transcriptional programs, such as transcription that slowly ramps up over time, might require thousands of RNAs to decode (Supplementary Fig. 6). Another important practical question is whether a calibration obtained in one system (such as cell culture; see ‘Calibration of editing rate’ in the Methods) can be used to decode distributions obtained in other systems (such as *in vivo* recordings). Nonetheless, even in the absence of a suitable calibration, algorithms, such as the decoder presented here, can be used to infer the relative timing of transcriptional events, and future work might focus on the development of internal calibration measurements for *in vivo* experiments.

The concept of RNA timestamps presented here might find widespread utility. For example, the demonstrated ability to order cells by transcriptional response could have great utility for

studying the diversity of responses to cellular perturbations^{33,34}. Using the same concept, alternative systems could be designed that record other kinds of signals besides transcription. For example, by using alternative dimerization systems^{35,36} to link ADAR to constitutively expressed timestamps in a stimulus-specific manner, it might be possible to construct timestamp systems that report on the timing of other kinds of cellular events, such as calcium or other signaling molecules. Moreover, we suspect that timestamps could readily be added to endogenous RNAs or that a similar concept could be used—for example, by observing edits in the poly(A) tail or by examining adenosine-rich parts of the transcript. Together, these observations suggest that RNA timestamps provide a scalable and extensible approach for recording the temporal activity of cells.

Online content

Any methods, additional references, Nature Research reporting summaries, source data, extended data, supplementary information, acknowledgements, peer review information; details of author contributions and competing interests; and statements of data and code availability are available at <https://doi.org/10.1038/s41587-020-0704-z>.

Received: 18 February 2020; Accepted: 7 September 2020;

Published online: 19 October 2020

References

- Muhar, M., Ameres, S. L. & Zuber, J. SLAM-seq defines direct gene-regulatory functions of the BRD4–MYC axis. *Science* **2793**, 1–10 (2018).
- Herzog, V. A. et al. Thi l-linked alkylation of RNA to assess expression dynamics. *Nat. Methods* **14**, 1198–1204 (2017).
- Schofi ld, J. A., Duffy, E. E., Kiefer, L., Sullivan, M. C. & Simon, M. D. TimeLapse-seq: adding a temporal dimension to RNA sequencing through nucleoside recoding. *Nat. Methods* **15**, 221–225 (2018).
- Erhard, F. et al. scSLAM-seq reveals core features of transcription dynamics in single cells. *Nature* **571**, 419–423 (2019).
- La Manno, G. et al. RNA velocity of single cells. *Nature* **560**, 484–498 (2018).
- Fukuda, M. et al. Construction of a guide-RNA for site-directed RNA mutagenesis utilising intracellular A-To-I RNA editing. *Sci. Rep.* **7**, 41478 (2017).
- Montiel-Gonzalez, M. F., Vallecillo-Viejo, I., Yudowski, G. A. & Rosenthal, J. J. C. Correction of mutations within the cystic fibrosis transmembrane conductance regulator by site-directed RNA editing. *Proc. Natl Acad. Sci. USA* **110**, 18285–18290 (2013).
- Montiel-González, M. F., Vallecillo-Viejo, I. C. & Rosenthal, J. J. C. An efficient system for selectively altering genetic information within mRNAs. *Nucleic Acids Res.* **44**, e157 (2016).
- Wettengel, J., Reautschnig, P., Geisler, S., Kahle, P. J. & Stafforst, T. Harnessing human ADAR2 for RNA repair - recoding a PINK1 mutation rescues mitophagy. *Nucleic Acids Res.* **45**, 2797–2808 (2017).
- Cox, D. B. T., Gootenberg, J. S., Abudayyeh, O. O., Franklin, B. & Kellner, M. J. RNA editing with CRISPR–Cas13. *Science* **358**, 1019–1027 (2017).
- Matthews, M. M. et al. Structures of human ADAR2 bound to dsRNA reveal base-flipping mechanism and basis for site selectivity. *Nat. Struct. Mol. Biol.* **23**, 426–433 (2016).
- Kuttan, A. & Bass, B. L. Mechanistic insights into editing-site specificity of ADARs. *Proc. Natl Acad. Sci. USA* **109**, 3295–3304 (2012).
- Eifler, T., Pokharel, S. & Beal, P. A. RNA-seq analysis identifies a novel set of editing substrates for human ADAR2 present in *Saccharomyces cerevisiae*. *Biochemistry* **52**, 7857–7869 (2013).
- Bertrand, E. et al. Localization of ASH1 mRNA particles in living yeast. *Mol. Cell* **2**, 437–445 (1998).
- Piatkevich, K. D. et al. A robotic multidimensional directed evolution approach applied to fluorescent voltage reporters. *Nat. Chem. Biol.* **14**, 352–360 (2018).
- Perry, R. P. & Kelley, D. E. Inhibition of RNA synthesis by actinomycin D: characteristic dose-response of different RNA species. *J. Cell. Physiol.* **76**, 127–139 (1970).
- Raj, A., van den Bogaard, P., Rifkin, S. A., van Oudenaarden, A. & Tyagi, S. Imaging individual mRNA molecules using multiple singly labeled probes. *Nat. Methods* **5**, 877–879 (2008).
- Schwanhüscher, B. et al. Global quantification of mammalian gene expression control. *Nature* **473**, 337–342 (2011).
- Wang, X., Chen, X. & Yang, Y. Spatiotemporal control of gene expression by a light-switchable transgene system. *Nat. Methods* **9**, 266–271 (2012).

20. Klein, A. M. et al. Droplet barcoding for single-cell transcriptomics applied to embryonic stem cells. *Cell* **161**, 1187–1201 (2015).
21. Macosko, E. Z. et al. Highly parallel genome-wide expression profiling of individual cells using nanoliter droplets. *Cell* **161**, 1202–1214 (2015).
22. Perli, S. D. et al. Continuous genetic recording with self-targeting CRISPR–Cas in human cells. *Science* **353**, 339–342 (2016).
23. Farzadfard, F. et al. Single-Nucleotide-Resolution Computing and Memory in Living Cells. *Mol. Cell* **75**, 769–780.e4 (2019).
24. Kalhor, R. et al. Rapidly evolving homing CRISPR barcodes. *Nat. Methods* **14**, 195–200 (2017).
25. Sheth, R. U., Yim, S. S., Wu, F. L. & Wang, H. H. Multiplex recording of cellular events over time on CRISPR biological tape. *Science* **358**, 1457–1461 (2017).
26. Tang, W. & Liu, D. R. Rewritable multi-event analog recording in bacterial and mammalian cells. *Science* **360**, eaap8992 (2018).
27. Chen, H. et al. Efficient, continuous mutagenesis in human cells using a pseudo-random DNA editor. *Nat. Biotechnol.* **38**, 165–168 (2020).
28. Frieda, K. L. et al. Synthetic recording and in situ readout of lineage information in single cells. *Nature* **541**, 107–111 (2016).
29. Shipman, S. L. et al. Molecular recordings by directed CRISPR spacer acquisition. *Science* **353**, aaf1175 (2016).
30. Zamft, B. M. et al. Measuring cation dependent DNA polymerase fidelity landscapes by deep sequencing. *PLoS ONE* **7**, e43876 (2012).
31. Schmidt, F., Cherepkova, M. Y. & Platt, R. J. Transcriptional recording by CRISPR spacer acquisition from RNA. *Nature* **562**, 380–385 (2018).
32. Farzadfard, F. & Lu, T. K. Genomically encoded analog memory with precise in vivo dna writing in living cell populations. *Science* **346**, 1256272 (2014).
33. Tay, S. et al. Single-cell NF-kappaB dynamics reveal digital activation and analogue information processing. *Nature* **466**, 267–271 (2010).
34. Nandagopal, N. et al. Dynamic ligand discrimination in the notch signaling pathway. *Cell* **172**, 869–880 (2018).
35. Rivera, V. M. et al. A humanized system for pharmacologic control of gene expression. *Nat. Med.* **2**, 1028–1032 (1996).
36. Erhart, D. et al. Chemical development of intracellular protein heterodimerizers. *Chem. Biol.* **20**, 549–557 (2013).

Publisher's note Springer Nature remains neutral with regard to jurisdictional claims in published maps and institutional affiliations.

© The Author(s), under exclusive licence to Springer Nature America, Inc. 2020

Methods

Cloning. All plasmids were constructed using either restriction cloning using restriction enzymes from New England Biolabs and the NEB Quick Ligation kit (M2200L) or the In-Fusion HD cloning enzyme mix (Clontech, 638911). Plasmids were grown in *E. coli* 10G Chemically Competent Cells (Lucigen, 60107-1) and were verified by Sanger sequencing (Eton Bioscience). All plasmids (Supplementary Table 1) are deposited on Addgene.

Owing to high repetition present in the RNA editing templates, inserts for plasmids 76, 147, 148, 149 and 187 (Supplementary Table 2) were ordered as sense and antisense ultramer oligonucleotides, which were annealed to each other before cloning. Plasmid 76 was cloned by inserting RNA templates (A_Short, B_Short, C, D and E) into the 3' UTR of an iRFP transcript expressed under a UbC promoter in a second-generation lentivirus backbone using SphI and ClaI. Subsequently, this plasmid was modified by the addition of a flavivirus xrRNA in the 5' UTR. Templates A_Short and B_Short were then extended by inserting another pair of annealed ultramers on the 5' side of A_Short and B_Short using SphI and MluI. The resulting templates are designated A and B. To generate plasmids 147, 148, 149 and 183 (as used in the paper), templates A and B were then moved into different backbones and different promoters by restriction cloning or by Gibson assembly with polymerase chain reaction (PCR) amplification of the timestamp template region. Template A is used throughout the paper; template B is shown in Supplementary Fig. 1 for comparison.

RNA purification, library preparation and sequencing. All cell cultures were lysed with 600 μ l of buffer RLT Plus from the Qiagen RNeasy Plus Mini Kit (Qiagen, 74136) and were pipetted up and down vigorously to homogenize. RNA was then purified using the Qiagen RNeasy Plus Mini Kit, following the instructions from the manufacturer. Subsequently, 11 μ l of purified RNA was reverse transcribed using SuperScript IV (Thermo Fisher Scientific, 18090050) and a barcoded version of SGR-174 (Supplementary Table 2), following the protocol from the manufacturer. Reverse transcription (RT) reactions were then purified using Agencourt Ampure XP beads at a 1:1 dilution (Beckman Coulter, A63881). Some portion of the eluent, typically 25%, was then analyzed by PCR using P5 and a barcoded version of SGR-176 (Supplementary Table 2) and the Q5 Hot Start High Fidelity 2 \times Master Mix (NEB, M0492L) with the following settings: 30 s of 98 °C denaturation; then 25–30 cycles of 10-s denaturation at 98 °C; 20 s of annealing at 70 °C; and then 25 s of extension at 72 °C. PCR reactions were then pooled and run on a gel, and a 400-bp band was extracted using the NucleoSpin PCR Cleanup Kit (Macherey-Nagel, 740609.250). The concentration of DNA in the resulting eluent was determined via a Qubit 2 fluorometer (Thermo Fisher Scientific) and was then adjusted to 4 nM for sequencing. The read structure is shown in Supplementary Fig. 7.

Sequencing was performed using NextSeq Mid Output 300 cycle kits (Illumina, FC-404-2004), MiSeq 300 cycle v2 kits (MS-102-2002) or MiSeq 600 cycle v3 kits (MS-102-3003), with at least 80-bp read 1 and 185-bp read 2, with 8-bp index 1 and 15-bp index 2.

HEK and 3T3 cell culture. Except in the case of the single-cell experiments, HEK293FT and 3T3 cells were plated in 24-well plates. Cells were grown in DMEM (Thermo Fisher Scientific, 10566016) and supplemented with penicillin–streptomycin (Thermo Fisher Scientific, 15140122) and 10% certified Tet system-approved FBS (Clontech, 631101). Transfections were performed using the TransIT-X2 system (Mirus, MIR 6000), following the manufacturer's instructions.

Experiments with the doxycycline promoter. For doxycycline experiments, HEK and 3T3 cells in 24-well plates were transfected with 300 ng of plasmid 147 or 148, 100 ng of pCMV Tet3G from the Tet-on 3G system (Clontech, 631168) and 100 ng of plasmids 116v1, 116v5 or 116v6. In the experiments for Fig. 1 and Supplementary Figs. 1 and 3, they were transfected with both 147 and 148 and received 150 ng of each plasmid. At least 12 h after transfection, cells were stimulated by adding doxycycline to a final concentration of 1 μ g ml⁻¹, followed by gentle mixing or swirling of the plate. Subsequently, transcription was halted by adding actinomycin D to a final concentration of 1 μ g ml⁻¹ in the same medium. After waiting for the experimental time period, cells were lysed using Buffer RLT Plus, and libraries were prepared as described above.

Experiments with the Vivid promoter. For experiments in Fig. 3c–g and Supplementary Fig. 4, 3T3s were transfected with 300 ng of plasmid 149, 100 ng of plasmid 133 and 100 ng of plasmid 116v5. For conditions in which cells were transfected with both plasmid 147 and plasmid 149, they received 100 ng each of plasmids 149, 147, pCMV Tet3G, 133 and 116v5. Cells were stimulated with a blue LED (Thorlabs, M455L2) with a total power of 200 μ W cm⁻². The LED was turned on for 1 h and was subsequently turned off. After the LED was turned off, the cells were wrapped in foil to prevent accidental light exposure. Cells were then lysed after the experimental time period.

As shown in Supplementary Fig. 4, cells were stimulated with blue light for 1 h and were then placed in darkness for 7 h. While still in darkness, cells were then stimulated with doxycycline as described above. After 1 h in doxycycline, cells were lysed.

As shown in Fig. 3c–g, cells were stimulated with blue light for 1 h and were then placed in darkness for 4 h. While still in darkness, cells were then stimulated with doxycycline as described above. After 1 h in doxycycline, cells were lysed.

HEK cell doxycycline experiment. For the experiment shown in Fig. 1d–f, cells were stimulated as above and were lysed at the following timepoints: 0 h (that is, immediately before adding doxycycline), 0.5 h after adding doxycycline, 1 h after adding doxycycline (that is, immediately before adding actinomycin D), 2 h after adding doxycycline, 3 h after adding doxycycline, 4 h after adding doxycycline, 5 h after adding doxycycline, 6 h after adding doxycycline, 7 h after adding doxycycline, 8 h after adding doxycycline, 9 h after adding doxycycline, 10 h after adding doxycycline, 11 h after adding doxycycline and 12 h after adding doxycycline. Each timepoint consisted of three replicates. On a separate occasion, we collected three replicates at 2.5 h after adding doxycycline and 4.5 h after adding doxycycline, and these timepoints functioned as our test timepoints in Supplementary Fig. 3. The data from Fig. 1d–f were further used in Figs. 2 and 3a,b.

Single-cell experiments. For all experiments involving single cells, HEK cell cultures were prepared; transfected with 100 ng of pAAV-CAG-GFP (Addgene 37825), 200 ng of plasmid 147, 100 ng of plasmid 116v5 and 100 ng of pCMV Tet3G; stimulated with doxycycline; and then silenced with actinomycin D as described above. The three induction conditions were as follows: cells in condition 1 were left in doxycycline for 1 h before lysis; cells in condition 2 were silenced with actinomycin D after 1 h and then left for 3 h; and cells in condition 3 were silenced with actinomycin D after 1 h and then left for 7 h. Subsequently, cells were treated with trypsin (Life Technologies, 25300054). After trypsinization, cells were centrifuged at 850g, washed in cold PBS and then resuspended in cold PBS. Then, 96-well plates were prepared, with each well containing a solution of 0.2% Triton-X with 2 U μ l⁻¹ of RNase inhibitor. Individual cells were sorted into the wells of this well plate using a MoFlo Astrios EQ flow cytometer. After sorting, the well plate was sealed, centrifuged and then placed at –80 °C overnight.

For the analysis in Fig. 4a–c, cells in condition 2 received plasmid 147B1, whereas cells in condition 3 received plasmid 147B3. The two populations of cells were mixed after trypsinization and sorted together. By contrast, cells in condition 1 received plasmid 147B1 and were sorted separately from the others.

Library preparation for the single cells proceeded as follows. Plates containing single cells were thawed, and 7 μ l of nuclease-free water was added to the single cells to bring the total volume up to 11 μ l. Subsequently, RT was performed using SuperScript IV and the SGR-174 RT primers, as in the case of the bulk samples, with the following modifications. RT primers were distributed so that each cell at a given timepoint received an RT primer with a different barcode. In addition, for each timepoint, we performed two no-template RT reactions. Finally, after the 50 °C step in the SuperScript IV protocol, we cooled the samples to 37 °C and added 20 U of exonuclease 1 (NEB, M0293S) to the reaction to remove excess primers. Samples then remained at 37 °C for 10 min before proceeding to the 80 °C heat inactivation step. After RT, the RT reactions for all cells and the two no-template controls at a given timepoint were pooled and cleaned with Ampure XP beads at a 1:1 dilution and were then analyzed by PCR using the same protocol as for the bulk samples. Cells were pooled before PCR as a way of reducing the number of cycles necessary to achieve amplification. We excluded cells if they received fewer than 150 reads or if the most common RNA barcode represented fewer than 80% of the total de-duplicated reads, which would indicate index swapping between cells.

For experiments involving 10x single cells, as in Fig. 4d–f, cells in the 1-h condition were induced with doxycycline 1 h before 10x preparation; cells in the 2-h condition were induced with doxycycline 2 h before 10x preparation and silenced with actinomycin D 1 h later and left for 1 h; and cells in the 4-h condition were induced with doxycycline 4 h before 10x preparation, silenced with actinomycin D after 1 h and then left for 3 h. Cells were then treated with trypsin (Life Technologies, 25300054), spun down at 500g, washed in cold PBS and then resuspended in cold PBS with 0.04% wt/vol BSA. Cell concentration was counted, and the appropriate volume of cells was added to a 10x reaction for a targeted cell recovery of 2,000 cells. The reaction was run through a 10x chip according to the 10x Genomics Chromium Single Cell protocol. After the droplet generation step, the reaction was transferred to a PCR strip tube and RT, post-RT cleanup and complementary DNA (cDNA) amplification were completed after the 10x Genomics Chromium Single Cell protocol. After cDNA cleanup, 1–5 μ l of the cDNA product was analyzed by PCR with Phusion Hot Start Flex DNA Polymerase (New England Biolabs, M0535S), using a barcoded version of SGR-176 and a version of the 10x Genomics cDNA primer that included a P5 addition, with the following settings: 30 s of 98 °C denaturation; then 15–20 cycles of 10-s denaturation at 98 °C and 20 s of annealing at 63 °C; and then 25 s of extension at 72 °C. The rest of the cDNA product was saved for the remainder of the 10x Genomics Chromium Single Cell protocol. The PCR product was then purified with Ampure beads at a 1:1 dilution and then adjusted to a concentration of 4 nM for sequencing. The libraries were sequenced on a MiSeq with the following read structure: 28 Read 1, 8 Index 1, 8 Index 2 and 200 Read 2. The number of editing sites sequenced per timestamp is fewer, as only Sequencing Read 2 is used for timestamps.

Alignment and edit counting. The alignment and analysis pipeline for sequencing data is summarized in Supplementary Fig. 7. Analysis of sequencing data was performed using custom MATLAB code (MATLAB 2017a). Briefly, in the case of single-cell data, we first performed de-duplication using a 9-bp unique molecular identifier on the RT primer (oligo SGR-174). Other data sets were not de-duplicated. Reads were then filtered to ensure that they had the minimum necessary read length (67 bases on Read 1 and 184 bases on Read 2). Note that Read 1 was on the RT primer, so Read 1 reads the reverse complement of the RNA sequence. Thus, the expected mutation was A to G on Read 2 and T to C on Read 1. Alignment was performed using all bases that were not As on Read 2 or that were not Ts on Read 1. Reads were considered to be aligned to the template if 95% of the non-A (for Read 2) or non-T (for Read 1) bases matched the template. Furthermore, we required 90% of the bases that were expected to be As on Read 2 or Ts on Read 1 to have Q-scores greater than 27 (Supplementary Fig. 7); reads that failed to achieve this threshold were discarded.

Finally, we required that all reads have at least one edit in Read 1 and at least one edit in Read 2 for analysis. We implemented this requirement because it appeared to eliminate several artifacts that we occasionally observed in our data. For example, each well would sometimes have different (large) numbers of RNAs with zero edits or one edit, which would confound attempts to infer timing by gradient descent. As a consequence of this requirement, all of the histograms of edits per RNA presented in this paper appear to show only very few RNAs with fewer than ~12 edits. There are ~12 bases in template A, all of which are on Read 2, that are edited much more quickly than any bases on Read 1. These are of the form UAG and all form bulges in the RNA secondary structure, which are thought to encourage editing by ADAR. Exclusion of RNAs with zero edits on Read 1 or Read 2 predominantly limits the analysis to RNAs that are already fully edited at all 12 of those As, thus causing all RNAs to have at least 12 edits. RNAs with fewer than 12 edits might be useful for inferring transcriptional dynamics on the order of minutes, which we observed in preliminary experiments not presented here.

Calibration of editing rate. When analyzing RNA editing distributions generated in 3T3s using a gradient descent algorithm with basis vectors derived from HEK293 cells (as in Fig. 3), we included a further calibration step before analysis, as follows. First, we generated a timestamp library from 3T3 cells that were transfected with the doxycycline timestamp system, induced with doxycycline for 1 h and then lysed. We then calculated the mean number A of edits per RNA for cells in the 1-h HEK cell induction data set and the mean number B of edits per RNA in the 1-h 3T3 cell induction data set and multiplied the number of edits in subsequent 3T3 data by the ratio A/B. This procedure was done because we observed that the editing rate was uniformly higher in 3T3 data than in the corresponding HEK cell data, for reasons that were not determined.

Exponential model. The exponential model in Supplementary Fig. 3 was implemented using custom code in Python (Python 3.6) as follows. For each editable position i on the template, we assume that the likelihood of base i being edited follows an exponential distribution with parameter λ_i , to be estimated from the data. Assuming an instantaneous pulse of transcriptional activity at time $t=0$, the fraction of edited bases for position i , y_i , can be modelled as the cumulative distribution function of the exponential distribution:

$$y_i(t) = 1 - e^{-\lambda_i t}$$

To more accurately capture the experimental setup, we model y_i as an underlying process, which is exponential, but with start time uniformly distributed in $[0, t_{\text{stop}}]$, where $t=0$ represents when doxycycline is added to the cells, and t_{stop} is the time at which actinomycin D was added to the cells. Specifically, we fit a function of the form

$$y_i(t) = \begin{cases} 1 - \frac{1 - e^{-\lambda_i t}}{\lambda_i t} & \text{if } t \leq t_{\text{stop}} \\ 1 - \frac{e^{-\lambda_i (t - t_{\text{stop}})} - e^{-\lambda_i t}}{\lambda_i t_{\text{stop}}} & \text{if } t > t_{\text{stop}} \end{cases}$$

where t_{stop} was 1 h, and λ_i was fit to the data using nonlinear least squares. This function was fit for times $t \geq 1.5$ h, because the editing distributions for earlier timepoints are strongly affected by populations of RNA present before doxycycline addition. For the analysis in Supplementary Fig. 3, analysis was then performed using only those adenosines for which the R^2 of the resulting fit was greater than 0.9. We model the total number of edits to the RNA with a Poisson binomial distribution with n trials where n is the total number of editable positions and success probabilities given by $y_i(t)$ for each position i . The probability of having n edits at time t is given by

$$p(n, t) = \sum_{A: \text{sum}(A)=n} \prod_{k: A_k=1} y_k(t) \prod_{j: A_j=0} 1 - y_j(t)$$

Here, A is a binary vector with each entry corresponding to a specific adenosine in the timestamp editing region. $A_k=1$ if adenosine k has been edited to inosine, and $\text{sum}(A)$ counts the total number of edits in A . Time estimates using the exponential model were then made by minimizing the Kullback–Leibler divergence between

$p(n, t)$ and the empirical distribution $q(n)$ over t . $p(n, t)$ was calculated in practice via a dynamic programming approach.

For Supplementary Fig. 3, the exponential model was calculated using the data from a single replicate of the HEK doxycycline experiment. The distributions in Supplementary Fig. 3c show the number of edits per RNA calculated across all bases with R^2 greater than 0.9 for that replicate, and the Poisson binomial model in Supplementary Fig. 3c likewise included the same bases. By contrast, for Supplementary Fig. 3d, bases were retained only if they had an R^2 greater than 0.9 in all three replicates from the HEK doxycycline experiment. For this reason, the apparent numbers of edits per RNA are lower in Supplementary Fig. 3d than in Supplementary Fig. 3c.

Gradient descent. A schematic depicting the gradient descent algorithm is shown in Supplementary Fig. 8. The gradient descent in Figs. 2 and 3 and Supplementary Figs. 6 and 9 was implemented using custom code in MATLAB (MATLAB 2017a). Briefly, the gradient descent algorithm was given an RNA editing distribution (a normalized histogram of edits per RNA), which could be either an experimentally measured distribution (Figs. 2b–d and 3c–g) or a simulated distribution (Fig. 3a,b and Supplementary Figs. 6 and 9). Simulated distributions were generated using data from the experiment in Fig. 1e,f, either by randomly sampling RNAs from a specified timepoint or timepoints from that experiment (as in Fig. 3a,b and Supplementary Fig. 9) or by taking convex combinations of the editing distributions from that experiment (as in Supplementary Fig. 6). The gradient descent algorithm was also given a set of ‘basis vector’ histograms, which were obtained by combining the data at each timepoint from all three replicates from the HEK doxycycline experiment. The gradient descent was then initialized by drawing a set of weights from a Dirichlet distribution with all parameters set to unity. The gradient descent minimized the mean squared error (L2 norm) between the input distribution and the convex combination of the basis vectors given by the weights. For each simulated distribution, we performed the gradient descent 1,000 times and took the solution that minimized the L2 norm.

To avoid overfitting, whenever an input to the gradient descent was simulated, the distributions used as ‘basis’ functions in the gradient descent were averages of all three biological replicates from the experiment in Fig. 1e,f, whereas the simulated distributions were always generated from the data associated with a single replicate.

An exception to this policy was made for Supplementary Fig. 6, where RNAs were randomly chosen from all three replicates, and then the gradient descent was performed using basis functions that were averages of all three replicates. This exception was made to be able to simulate ramp distributions with 10,000 or 30,000 RNAs, which would not have been possible without combining data from all three replicates. For this reason, there is some risk that the accuracy of the decoding in Supplementary Fig. 6 would be lower if different basis vectors were used for the decoding.

An analysis of the performance of the gradient descent algorithm on random simulated transcriptional programs is presented in Supplementary Fig. 9. In general, the gradient descent algorithm succeeded in reproducing the editing histogram with high accuracy (Supplementary Fig. 9a). Additionally, the weight vector found by the gradient descent algorithm was, on average, much closer to the true weight vector than randomly sampled vectors (Supplementary Fig. 9b), although this was not always true (Supplementary Fig. 9c). Because the simulated and approximated editing histograms were generated with different basis distributions, noise present in those basis distributions meant that the true weight vector was not, in general, the optimal solution for the gradient descent (Supplementary Fig. 9d,e).

Analysis of two peaks experiments. In Fig. 3b,g, a weight distribution generated by the gradient descent algorithm was defined to have two peaks if the sum of the weights on the 1- and 2-h timepoints and the sum of the weights on the 4- and 5-h timepoints were both greater than the weight on the 3-h timepoint. When making Fig. 3b,g, we generated several possible definitions for what would constitute ‘two peaks’ and obtained qualitatively similar behavior (monotonically increasing identification of two peaks) for all of them. This definition was chosen for presentation arbitrarily.

Accuracy metrics. In Fig. 2c, temporal estimation error is calculated by multiplying the distance of each timepoint away from the expected timepoint by the weight assigned to that timepoint and summing. Thus, for the 3-h single-induction pulse, if the decoder assigned weights of 0.5 to the 3-h timepoint and 0.5 to the 5-h timepoint, the resulting estimation error would be $0.5 \times 0 + 0.5 \times 2 = 1$ h. This metric is not directly comparable to the 95% confidence interval presented in reference to Fig. 1f, but if the procedure used to generate Fig. 2c is repeated for ‘sets’ consisting of a single RNA, the error obtained is 1.9 ± 0.47 h (mean \pm s.d., $n = 12$ timepoints), which is significantly greater than the 1.49 ± 0.42 h obtained for sets of four RNAs (means differ by >3 standard errors), supporting the statement that the error for four RNAs is less than that for a single RNA.

For the arbitrary transcriptional program experiments in Supplementary Fig. 9 and the ramp in Supplementary Fig. 6, we calculated the accuracy as the sum of the absolute values of the differences between the assigned and expected

weights, divided by 2 to avoid double counting. Thus, if we expected one timepoint to get 100% of the total weight, and that timepoint, instead, got 80% of the total weight, then the resulting accuracy would be 80%.

In Fig. 4b, the accuracy is calculated as the mean absolute difference between the single-cell estimates and the estimate for the bulk distribution. We calculate the accuracy in this way for the single cells because the underlying transcriptional program is not known. The single cells stay on ice for up to 1 h during processing, and we have not measured the editing kinetics during that time.

Neuron culture preparation and transfection. All procedures involving animals at Massachusetts Institute of Technology were conducted in accordance with the National Institutes of Health Guide for the Care and Use of Laboratory Animals and approved by the Massachusetts Institute of Technology Committee on Animal Care. Primary hippocampal neuron culture was prepared as previously described¹⁵. Briefly, neurons were transfected at 6–7 days in vitro (DIV) using a commercial calcium–phosphate kit (Thermo Fisher Scientific, K278001) with 600 ng of pUC19, 200 ng of plasmid 116v5 and 200 ng of plasmid 187. Neurons were then incubated with calcium–phosphate precipitates for 30–60 min, followed by washing with MEM buffer at pH 6.7–6.8 to remove residual precipitates.

Neuron culture stimulation. Neurons were stimulated at 14–15 DIV. Neurons were placed in 1 ml of plating medium (500 ml of MEM, 2.5 g of glucose, 50 mg of transferrin, 1.1 g of HEPES, 5 ml of 200 mM l-glutamine, 12.5 mg of insulin, 50 ml of HI FBS and 10 ml of B27 supplement). To stimulate the neurons, we added 250 μ l of 5 \times depolarization medium and agitated gently. Neurons were then left for 1 h in an incubator. Subsequently, the medium was aspirated, and neurons were washed twice in plating medium. They were then left in plating medium for a variable amount of time before being lysed in 600 μ l of buffer RLT Plus.

Plating medium

1. 500 ml of MEM (Thermo Fisher Scientific, 51200-038)
2. 2.5 g of glucose (Sigma-Aldrich, G7528-1KG)
3. 50 mg of transferrin (Sigma-Aldrich, T1283-500 mg)
4. 1.1 g of HEPES (Sigma-Aldrich, H3375-500G)
5. 5 ml of 200 mM l-glutamine (Thermo Fisher Scientific, 25030-081)
6. 12.5 mg of insulin (Millipore, 407709)
7. 50 ml of HI FBS (VWR, 45000-736)
8. 10 ml of B27 Supplement (Thermo Fisher Scientific, 17504-044)

5 \times depolarization medium

1. 170 mM KCl
2. 10 mM HEPES, pH 7.4
3. 1 mM MgCl₂
4. 2 mM CaCl₂

Neuron inference experiment. Owing to the limited availability of neuron culture at any given time, the data for Supplementary Fig. 5 were gathered in two separate experiments with different sample replicates per experiment. We collected the following timepoints: before stimulation (that is, immediately before adding depolarization medium); 1 h after stimulation (that is, immediately before washing the neurons in fresh medium); 2 h after stimulation; 3 h after stimulation; 3.5 h after stimulation; 4 h after stimulation; 5 h after stimulation; 5.5 h after stimulation; 6 h after stimulation; and 7 h after stimulation.

The breakdown of the data in Supplementary Fig. 5 by experiment is as follows. In the first experiment, we collected two samples before stimulation, three samples at 1 h, three samples at 2 h, three samples at 3 h, three samples at 4 h and two samples at 5 h. In the second experiment, we collected one sample at 2 h, two samples at 3 h, three samples at 3.5 h, two samples at 4 h, two samples at 5 h, three samples at 5.5 h, two samples at 6 h and two samples at 7 h.

Linear interpolation. In Supplementary Fig. 5, the timepoints associated with the c-fos neural activity were determined by linear interpolation as follows. We first calculated the mean number of edits per RNA for all replicates and determined

the mean across replicates for each timepoint (plotted in Supplementary Fig. 5b, designated M_i). Then, to perform the estimate, for each replicate R from timepoint t , we identified the two timepoints, t_1 and t_2 , such that $t = t_1, t_2$ and such that the mean m_R of replicate R obeyed $M_{t_1} < m_R < M_{t_2}$. The time estimate for replicate R is then determined as

$$t_R = \frac{m_R - M_{t_1}}{M_{t_2} - M_{t_1}}(t_2 - t_1) + t_1$$

Reporting Summary. Further information on research design is available in the Nature Research Reporting Summary linked to this article.

Data availability

Raw data were used in all figures that are not described in the captions as schematics. The data sets generated and analyzed during the current study are available on the Zenodo Archive, record 3897464. Raw sequencing data are available at the Sequence Read Archive under PRJNA658989.

Code availability

The code used to produce analysis and figures for the current study is available on the Zenodo Archive, record 3897464.

Acknowledgements

We acknowledge N. Jakimo, A. T. Wassie, J. Gootenberg and O. Abudayeh for helpful discussions. Plasmids containing ADAR2 mutants were generously provided by J. Gootenberg and O. Abudayeh. Neuron culture was supplied by D. Park. We acknowledge Y. Lin and X. Sun for help with neuron induction experiments. Plasmids deposited on Addgene. F.C. acknowledges funding from 1DP5OD024583, the National Institutes of Health (NIH) Director's Early Independence Award, the Paul G. Allen Frontiers Group, the Burroughs Wellcome Fund and the Schmidt Fellows Program at the Broad Institute. E.S.B. acknowledges funding by John Doerr, the Open Philanthropy Project, NIH 1R01MH114031, the HHMI-Simons Faculty Scholars Program, the U.S. Army Research Laboratory and the U.S. Army Research Office under contract/grant numbers W911NF1510548, NIH 1RM1HG008525, NIH UF1NS107697, NIH 2R01DA029639, NIH 1R01MH103910, UF1NS107697, NIH Director's Pioneer Award 1DP1NS087724 and the MIT Media Lab. E.S.B. also acknowledges L. Yang as a supporter of his lab. S.G.R. acknowledges funding through the Myhrvold and Havranek Family Charitable Fund Hertz Graduate Fellowship and the National Science Foundation Graduate Research Fellowship Program (award no. 1122374). J.S. acknowledges funding through the Hertz Graduate Fellowship. S.L. acknowledges funding through the Molecular Biophysics Training Grant, NIH/NIGMS T32 GM008313. E.D.Z. acknowledges funding through the National Science Foundation Graduate Research Fellowship Program (award no. 1122374) and through the Computational and Systems Biology training grant, T32 GM087237.

Author contributions

S.G.R., F.C. and E.S.B. conceived strategies for the design of the RNA timestamps. S.G.R., L.M.C. and J.S. conceived of and implemented the design of the reporter RNAs. S.G.R., L.M.C., F.C. and S.L. validated and characterized the timestamp system in cells. S.G.R. and E.D.Z. conceived of and implemented the gradient descent model. S.G.R. and F.C. analyzed the data. S.G.R., F.C. and E.S.B. wrote the manuscript.

Competing interests

All authors are listed as inventors on a patent application for this technology.

Additional information

Supplementary information is available for this paper at <https://doi.org/10.1038/s41587-020-0704-z>.

Correspondence and requests for materials should be addressed to E.S.B. or F.C.

Reprints and permissions information is available at www.nature.com/reprints.

Reporting Summary

Nature Research wishes to improve the reproducibility of the work that we publish. This form provides structure for consistency and transparency in reporting. For further information on Nature Research policies, see [Authors & Referees](#) and the [Editorial Policy Checklist](#).

Statistics

For all statistical analyses, confirm that the following items are present in the figure legend, table legend, main text, or Methods section.

n/a Confirmed

- The exact sample size (n) for each experimental group/condition, given as a discrete number and unit of measurement
- A statement on whether measurements were taken from distinct samples or whether the same sample was measured repeatedly
- The statistical test(s) used AND whether they are one- or two-sided
Only common tests should be described solely by name; describe more complex techniques in the Methods section.
- A description of all covariates tested
- A description of any assumptions or corrections, such as tests of normality and adjustment for multiple comparisons
- A full description of the statistical parameters including central tendency (e.g. means) or other basic estimates (e.g. regression coefficient) AND variation (e.g. standard deviation) or associated estimates of uncertainty (e.g. confidence intervals)
- For null hypothesis testing, the test statistic (e.g. F , t , r) with confidence intervals, effect sizes, degrees of freedom and P value noted
Give P values as exact values whenever suitable.
- For Bayesian analysis, information on the choice of priors and Markov chain Monte Carlo settings
- For hierarchical and complex designs, identification of the appropriate level for tests and full reporting of outcomes
- Estimates of effect sizes (e.g. Cohen's d , Pearson's r), indicating how they were calculated

Our web collection on [statistics for biologists](#) contains articles on many of the points above.

Software and code

Policy information about [availability of computer code](#)

Data collection

No software was used for data collection.

Data analysis

Custom matlab code was used. The software versions used is provided

For manuscripts utilizing custom algorithms or software that are central to the research but not yet described in published literature, software must be made available to editors/reviewers. We strongly encourage code deposition in a community repository (e.g. GitHub). See the Nature Research [guidelines for submitting code & software](#) for further information.

Data

Policy information about [availability of data](#)

All manuscripts must include a [data availability statement](#). This statement should provide the following information, where applicable:

- Accession codes, unique identifiers, or web links for publicly available datasets
- A list of figures that have associated raw data
- A description of any restrictions on data availability

Raw data is used in all figures that are not described in the captions as schematics. The datasets generated during and analysed during the current study are not publicly available because the manuscript is in the review process. However, the data are available from the corresponding author on request.

Field-specific reporting

Please select the one below that is the best fit for your research. If you are not sure, read the appropriate sections before making your selection.

- Life sciences Behavioural & social sciences Ecological, evolutionary & environmental sciences

Life sciences study design

All studies must disclose on these points even when the disclosure is negative.

Sample size	Sample size was not predetermined. In all cases, the observed variance between technical replicates was small, so additional samples were not produced.
Data exclusions	For single cell analysis, we excluded cells if they received fewer than 150 reads, or if the most common RNA barcode represented fewer than 80% of the total deduplicated reads, which would indicate index swapping between cells. No other data was excluded. Data was also excluded if metrics produced by the Illumina short read sequencers we used showed that the reads were of low quality, in which case the data was rerun to obtain high quality sequencing reads.
Replication	We observed that analyzing low quality sequencing reads yielded very different estimates of the number of edits per RNA. Accounting for quality of the sequencing reads, we did not fail to replicate any results.
Randomization	No samples were randomized in this study.
Blinding	There was no group allocation that necessitated blinding.

Reporting for specific materials, systems and methods

We require information from authors about some types of materials, experimental systems and methods used in many studies. Here, indicate whether each material, system or method listed is relevant to your study. If you are not sure if a list item applies to your research, read the appropriate section before selecting a response.

Materials & experimental systems

n/a	Involved in the study
<input checked="" type="checkbox"/>	<input type="checkbox"/> Antibodies
<input type="checkbox"/>	<input checked="" type="checkbox"/> Eukaryotic cell lines
<input checked="" type="checkbox"/>	<input type="checkbox"/> Palaeontology
<input type="checkbox"/>	<input checked="" type="checkbox"/> Animals and other organisms
<input checked="" type="checkbox"/>	<input type="checkbox"/> Human research participants
<input checked="" type="checkbox"/>	<input type="checkbox"/> Clinical data

Methods

n/a	Involved in the study
<input checked="" type="checkbox"/>	<input type="checkbox"/> ChIP-seq
<input checked="" type="checkbox"/>	<input type="checkbox"/> Flow cytometry
<input checked="" type="checkbox"/>	<input type="checkbox"/> MRI-based neuroimaging

Eukaryotic cell lines

Policy information about [cell lines](#)

Cell line source(s)	HEK 293FT cells from Thermofisher, and NIH 3T3 cells from ATCC.
Authentication	Cell lines were commercially purchased, but not authenticated
Mycoplasma contamination	Cell lines were not tested for mycoplasma
Commonly misidentified lines (See ICLAC register)	<i>Name any commonly misidentified cell lines used in the study and provide a rationale for their use.</i>

Animals and other organisms

Policy information about [studies involving animals](#); [ARRIVE guidelines](#) recommended for reporting animal research

Laboratory animals	C57BL/6j P0 for neuron culture
Wild animals	<i>Provide details on animals observed in or captured in the field; report species, sex and age where possible. Describe how animals were caught and transported and what happened to captive animals after the study (if killed, explain why and describe method; if released, say where and when) OR state that the study did not involve wild animals.</i>
Field-collected samples	<i>For laboratory work with field-collected samples, describe all relevant parameters such as housing, maintenance, temperature, photoperiod and end-of-experiment protocol OR state that the study did not involve samples collected from the field.</i>
Ethics oversight	All procedures involving animals at MIT were conducted in accordance with the US National Institutes of Health Guide for the Care and Use of Laboratory Animals and approved by the Massachusetts Institute of Technology Committee on Animal Care.

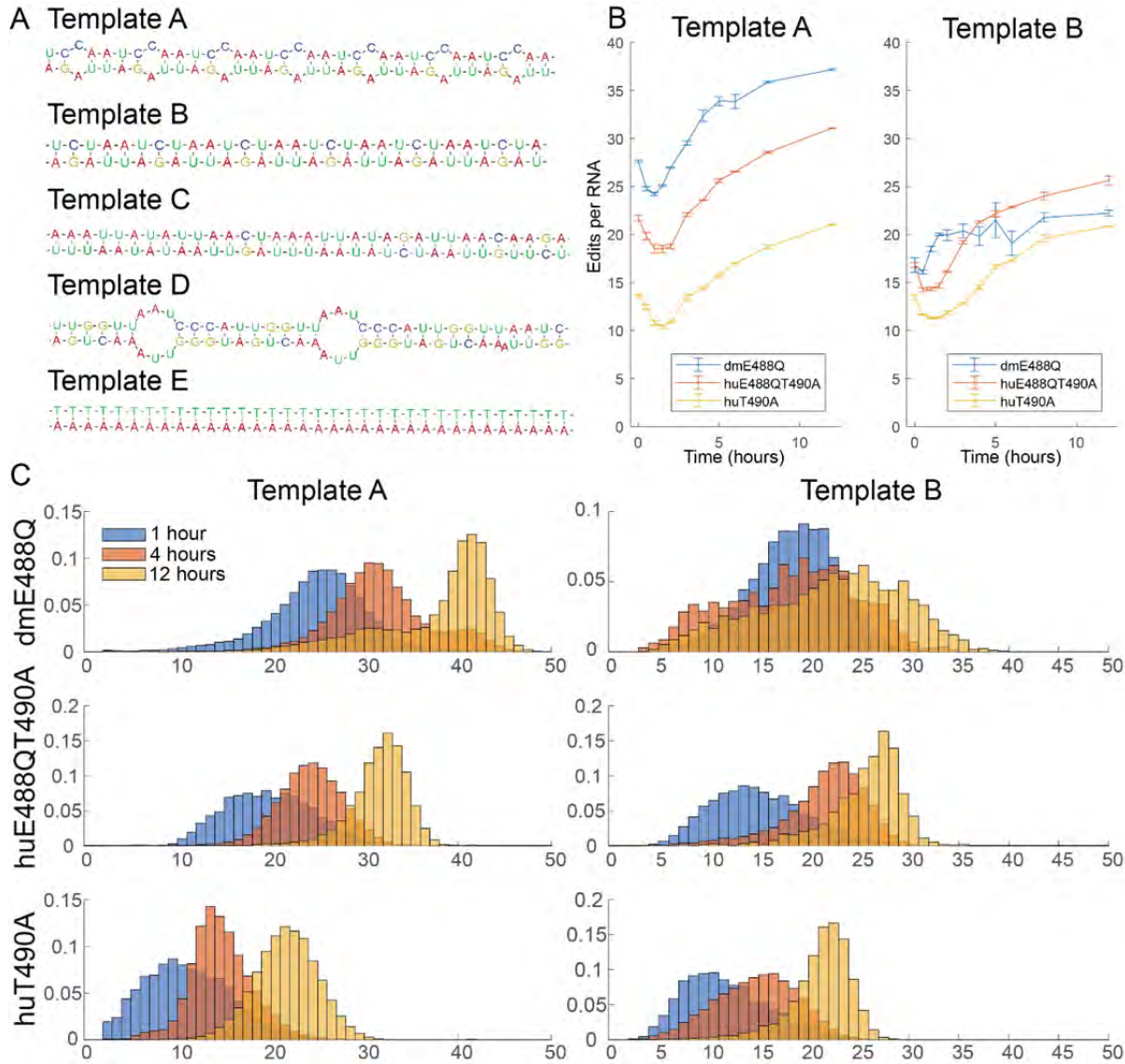
Note that full information on the approval of the study protocol must also be provided in the manuscript.

Supplementary information

RNA timestamps identify the age of single molecules in RNA sequencing

In the format provided by the authors and unedited

1



2

3

4

5

6

7

8

9

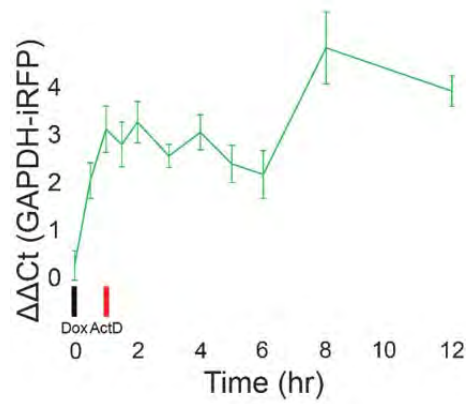
10

11

12

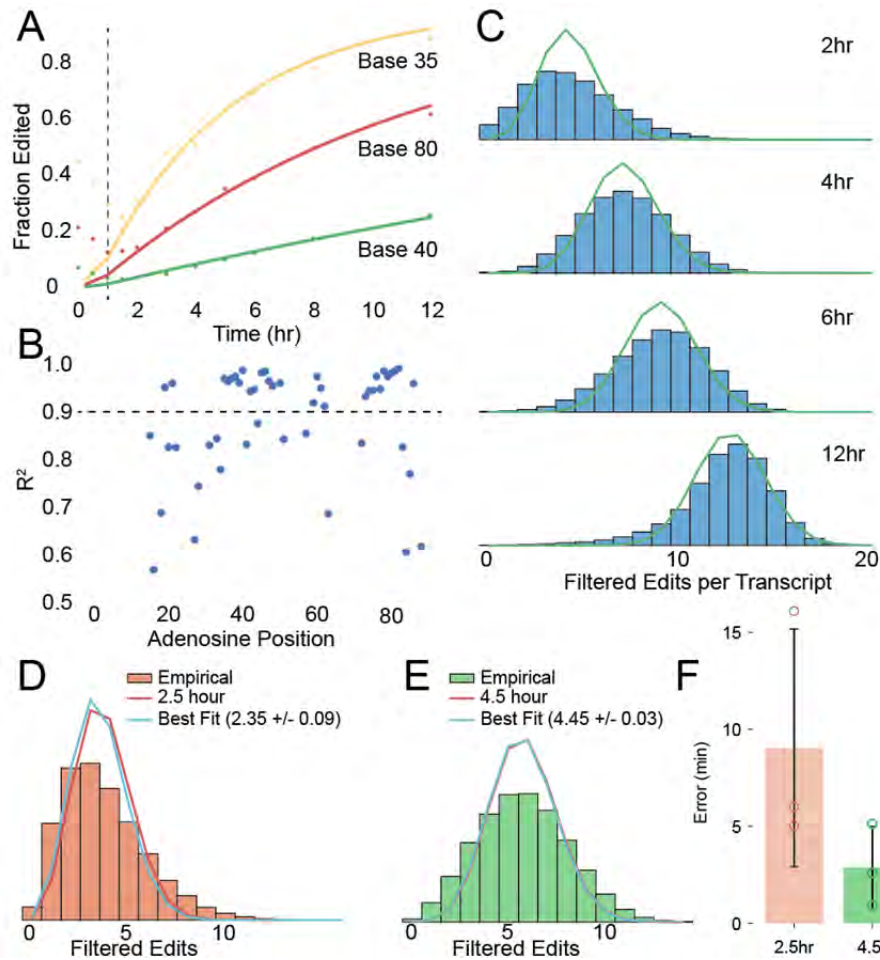
13

Supplementary Figure 1: (A) Five editing templates that were tested are shown. Of these, only templates A and B showed robust temporal editing that seemed appropriate for the construction of the timestamp system. Notes on the templates are in Supplementary Table 3. (B) The mean number of edits per RNA for several different timepoints is shown for three different ADAR variants, and for templates A and B. The protocol used here is identical to that in Fig. 1E. Some combinations, such as dmE488Q with template A, may show greater temporal resolution at short timescales. Data represented as mean \pm std ($n = 3$ biological replicates). (C) Example editing histograms are shown for three different timepoints, for each combination of the three enzymes and two templates in (B).



14
15
16
17
18

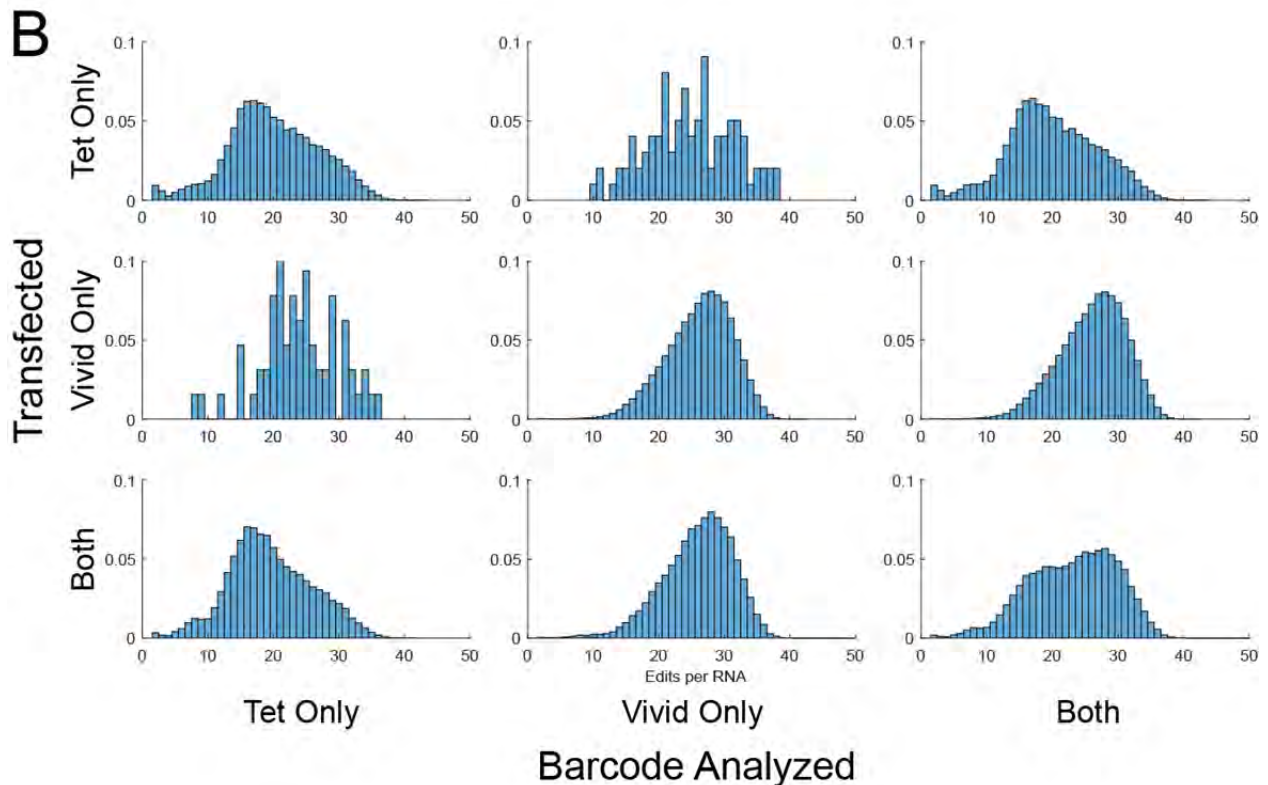
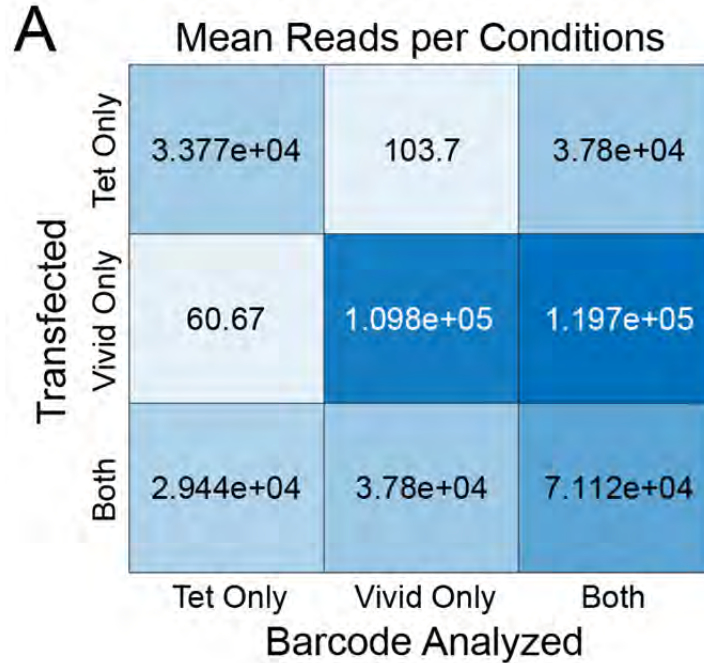
Supplementary Figure 2: The qPCR for the iRFP transcript, normalized to GAPDH, is shown as a function of time during the experiment in Fig. 1E. Values are normalized to the pre-doxycycline timepoint. Error bars show mean \pm std (N= 3 biological samples).



19

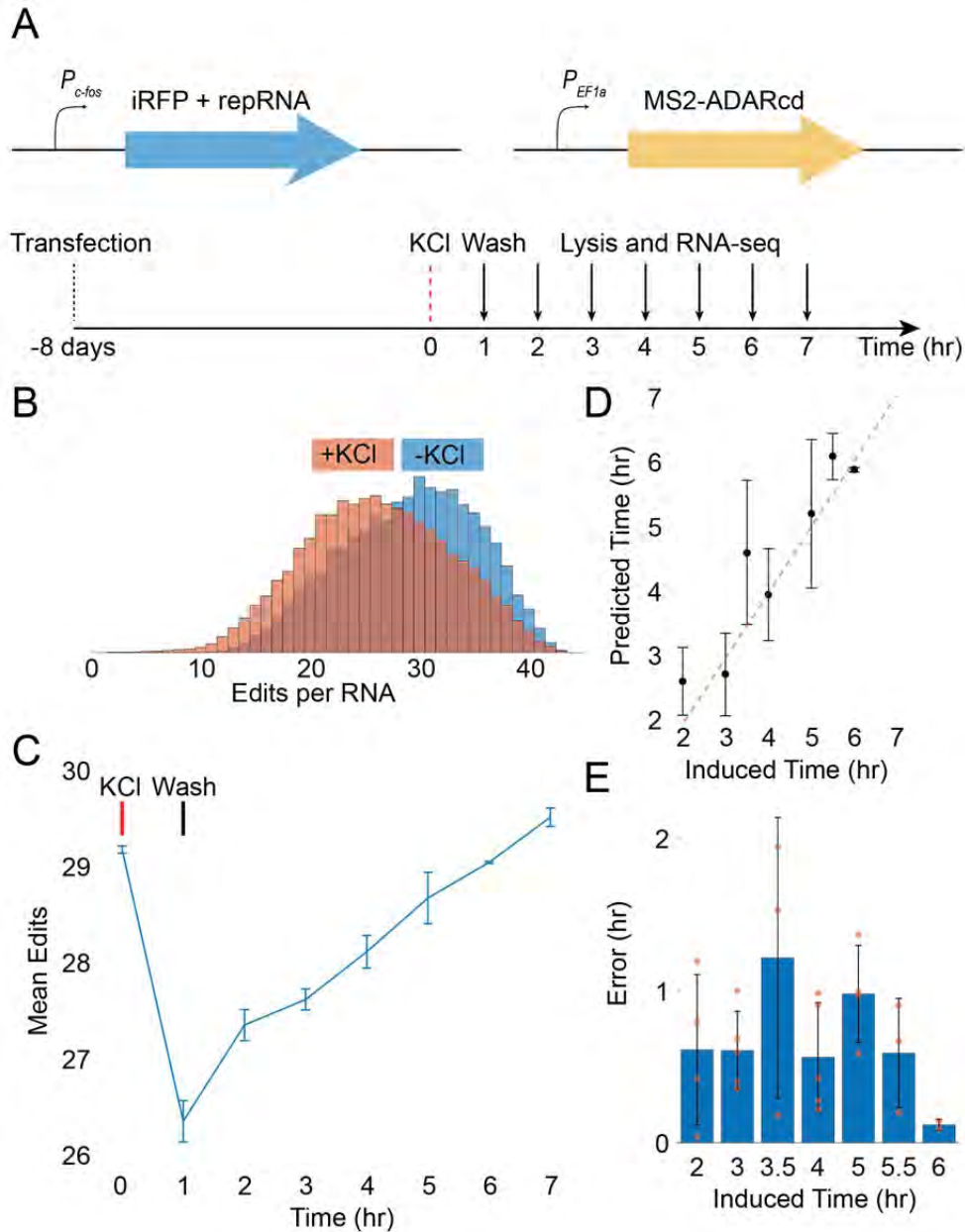
20 **Supplementary Figure 3.** We designed a statistical model to predict the RNA age distribution
 21 as a function of time since doxycycline induction. If the adenosines on the timestamp
 22 are edited independently and uniformly in time, then for each adenosine on the timestamp,
 23 the fraction of RNAs with adenosines at that site should decrease exponentially with the time since
 24 transcription, with a site-specific rate constant that depends on the local sequence context. (A)
 25 For each adenosine on the timestamp, we fitted an exponential cumulative distribution function
 26 (CDF) to the editing fraction over time at that base. The fraction of A to I edits as a function of
 27 time is shown for three different bases on the timestamp, data from one replicate of 1E. Best
 28 exponential fits are shown. The black dotted line indicates the addition of actinomycin D. (B)
 29 We found 24 bases which fit well to the model (i.e., for which the value of R^2 was greater than
 30 0.9 across all replicates). For the same replicate as in (A), the R^2 value of the exponential fit is
 31 shown for each base on the transcript. The black dotted line indicates the $R^2 > 0.9$ cutoff used for
 32 the exponential model. (C) Analyzing only those bases, the distribution of edits per RNAs was
 33 well-approximated by a Poisson binomial distribution with a single parameter, t , which
 34 represents time since doxycycline was added to the medium (see Methods), with the weights in
 35 the Poisson binomial distribution given by the exponential CDFs. The masked editing histograms
 36 for four timepoints from the same replicate are shown (only the bases with $R^2 > 0.9$ are
 37 included). In green, the Poisson binomial distribution for each timepoint including all the bases
 38 with $R^2 > 0.9$ (see Methods). (D) We used this Poisson binomial distribution to infer the times of
 39 cells induced at 2.5 and 4.5 hours prior to lysis, timepoints that had not been included in the

40 dataset used to fit the exponential CDFs. By minimizing the Kullback-Leibler divergence (which
41 is equivalent to maximizing the likelihood) between the test distributions and the Poisson
42 binomial distribution over t , we inferred that timing of those events to be $2.35\text{hr} \pm 0.09\text{hr}$ and
43 $4.45\text{hr} \pm 0.03\text{hr}$ (mean \pm s.d., $N=3$ biological samples), respectively. In orange, the masked ($R^2 >$
44 0.9 in all 3 replicates from 1E, see Methods) editing histogram for a single 2.5 hour replicate
45 along with Poisson binomial distribution for 2.5 hours (red line), and the Poisson binomial
46 distribution with least KL divergence from the empirical distribution (blue line). The time
47 estimate is mean \pm s.d. ($N=3$ biological samples). (E) As in (D), but for the 4.5 hour timepoint.
48 (F) The mean absolute error is shown for the (D) and (E). Error bars show mean \pm S.D. ($N = 3$
49 biological samples).
50



51
 52 **Supplementary Figure 4.** The fact that timestamps work with multiple promoters raises the
 53 possibility of recording the activity of multiple promoters simultaneously in a single cell
 54 population, and we validated that this is possible using barcoded timestamps responsive to the
 55 Tet and Vivid promoters. All editing histograms are normalized to sum to 1. (A) For cells
 56 transfected with a barcoded TRE-responsive timestamp construct, a barcoded Vivid-responsive
 57 timestamp construct, or both, the number of reads for the TRE-responsive timestamp, Vivid-

58 responsive timestamp, or both are shown. When only one timestamp is transfected, only one
59 barcode is detected in significant numbers, confirming that there is minimal crossover between
60 timestamp barcodes. Note that the third column is not the sum of the first and second columns,
61 because it includes barcodes that did not perfectly align to either the Tet or Vivid timestamp
62 barcodes. **(B)** To further confirm the possibility of multiplexing using barcoded timestamps, we
63 analyzed the editing histograms for cells that were transfected with a barcoded TRE-responsive
64 timestamp construct, a barcoded Vivid-responsive timestamp construct, or both. The editing
65 histograms for the Vivid-responsive and TRE-responsive timestamps do not seem to change
66 when the other timestamp is also present, again suggesting that there is minimal cross-talk
67 between barcoded timestamp constructs. All editing histograms are normalized to sum to 1.
68



69

70 **Supp Fig. 5: Sequencing-Based Activity Measurement in Neurons using c-Fos Timestamps.**

71 (A) Schematic of timestamps constructs and experimental timeline for neuronal recording. (B)

72 Editing histograms are shown for neurons prior (blue) and one hour following (orange) KCl

73 induction. The lower overall editing rate for the +KCl case indicates the generation of new

74 repRNAs by the c-fos promoter. Editing histograms are normalized so the sum of all values is 1.

75 (C) The mean editing rate is shown as a function of time following KCl induction. (D) The

76 predicted and actual time estimates are shown for all timepoints. Dotted line is a guide for $Y=X$.

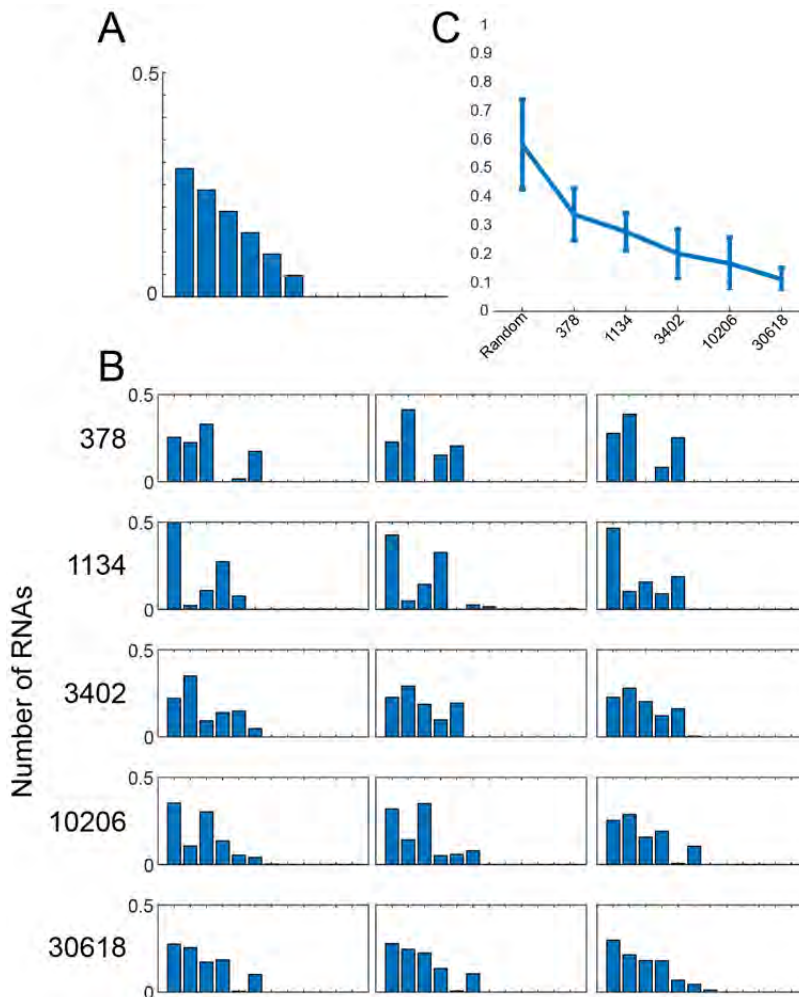
77 There are no estimates for the 1 hour and 7 hour timepoints due to mean interpolation. (E) The

78 mean absolute error in the predictions from (C) is shown as a function of time since induction.

79 All error bars (C-E) show mean \pm SD. (For C-E N = biological replicates as follows, 0hr N = 2,

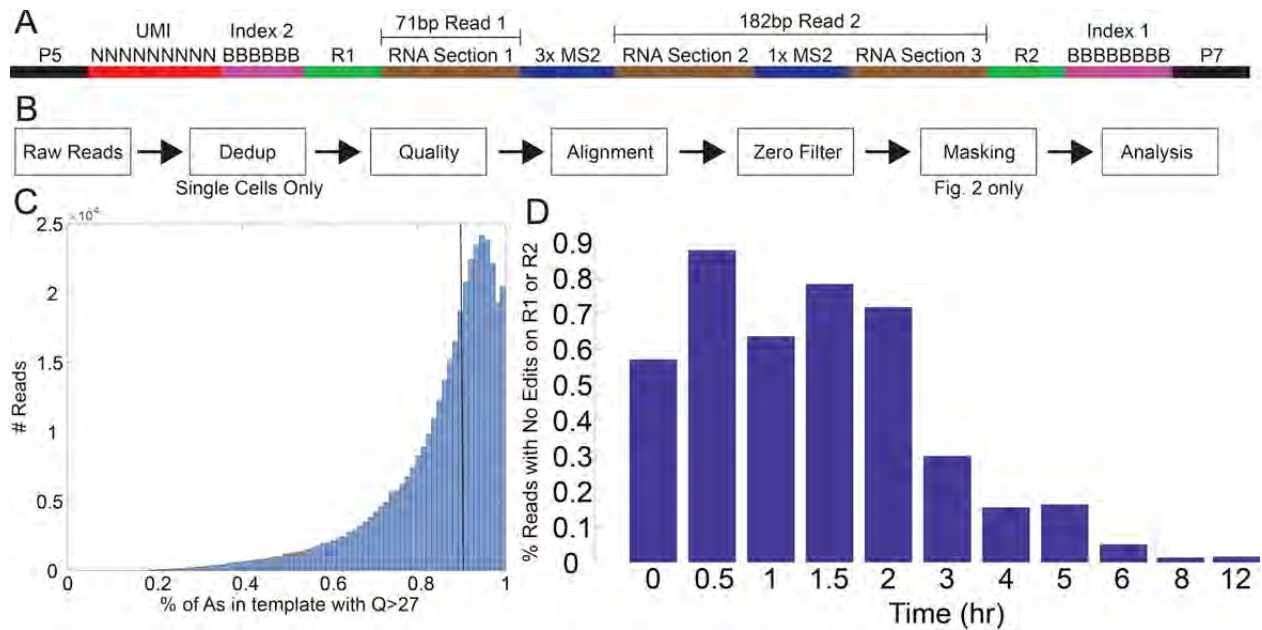
80 1hr N =3, 2hr N =4, 3hr N =5, 3.5hr N =3, 4hr N =5, 5hr N = 4, 5.5hr N = 3, 6hr N =2, 7hr N =2).

81

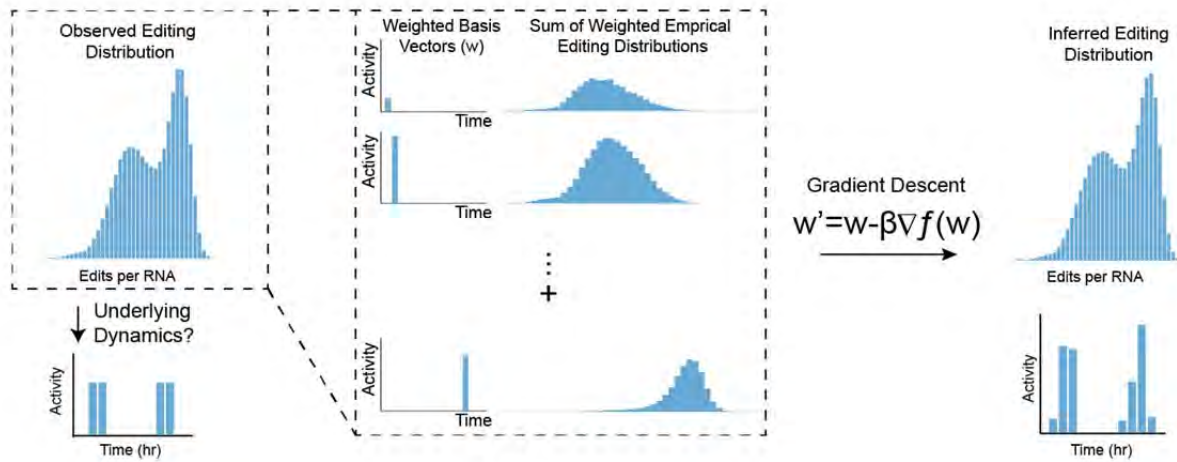


83

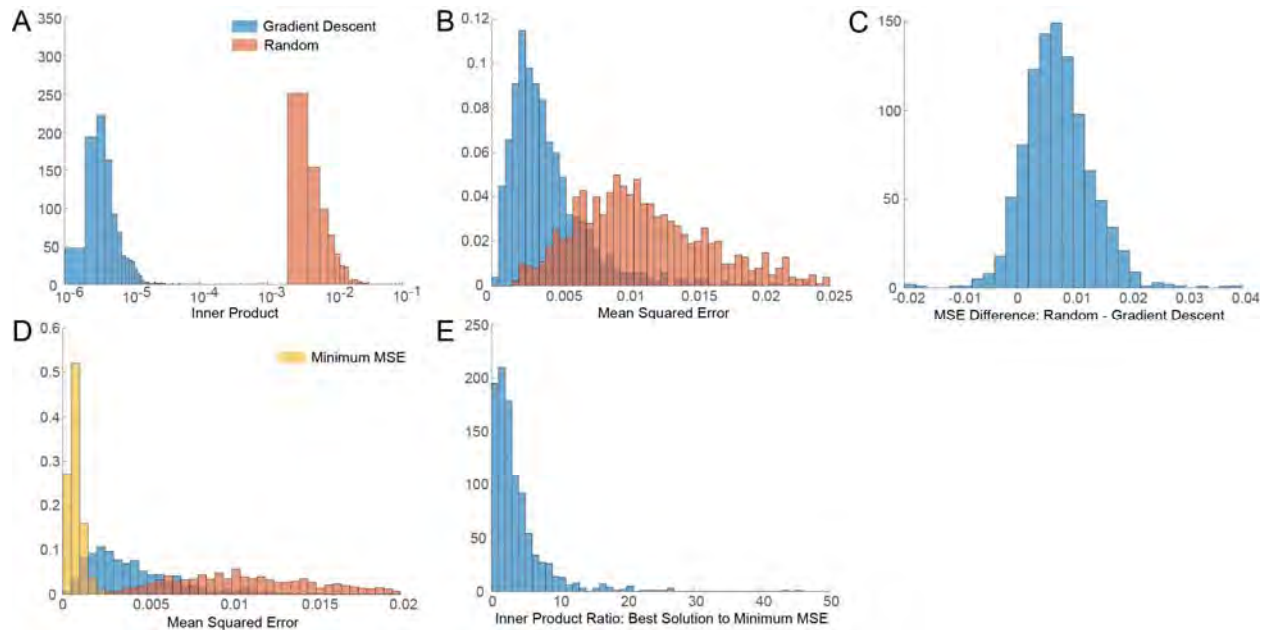
84 **Supplementary Fig. 6:** (A) The ramp profile used for simulations in B and C. (B) Distributions
 85 produced by the gradient descent decoder applied to the ramp profile in (A) with different
 86 numbers of RNAs (rows). Columns show technical replicates, each corresponding to a different
 87 random set of RNAs. Replicates for display were selected at random. (C) The fraction of weight
 88 incorrectly assigned. “Random” was calculated on distributions chosen from a Dirichlet
 89 distribution. Error bars show mean \pm std ($N = 10$ replicates).



90
91 **Supplementary Fig. 7:** (A) The read structure of the timestamp is shown. (B) A schematic of
92 the analysis pipeline is shown. See Methods. (C) For one replicate from the experiment in Fig.
93 1E, a histogram of the number of reads with a given percentage of As with Q score >27 is shown.
94 This includes all sites that are As on the timestamp template, i.e., it also counts Gs that are read
95 at positions that are A on the template. The black line indicates the 90% cutoff, which was
96 applied to all analysis. (D) For one replicate from the experiment in Fig. 1E, the percentage of
97 reads having no edits in either R1 or R2 is shown as a function of time. These reads were
98 excluded from analysis, except where otherwise stated in Fig. S2.
99



100
 101 **Supplementary Fig. 8: Schematic for decoder of timestamps using gradient descent.** Given
 102 an observed distribution of edits per RNA, we want to reconstruct the set of 1 hour weights
 103 which generate this observed distribution. To infer the transcriptional program underlying this
 104 observed editing distribution, we perform gradient descent to minimize the L2 norm between the
 105 observed distribution and a convex (a nonnegative linear combination with weights summing to
 106 1) combination of the 12 basis distributions. These basis distributions are obtained from the he
 107 average distribution of edits obtained from a transcriptional pulse lasting one hour that began
 108 between 1 and 12 hours in the past in the calibration experiment performed in HEK293 cells.



109
 110 **Supplementary Figure 9:** For 1000 randomly generated weight vectors (“simulated vectors”),
 111 chosen according to a Dirichlet distribution with uniform weights, we used gradient descent to
 112 find the approximation (“approximated vectors”) that minimized the L2 norm (“inner product”)
 113 between the RNA editing distribution corresponding to the simulated vectors (“simulated
 114 distributions”) and the RNA editing distribution corresponding to the approximated vectors
 115 (“approximated distributions”). We refer to the L2 norm between the distributions as the inner
 116 product to distinguish it from the L2 norm between the vectors, which we refer to as the mean
 117 squared error (MSE). **(A)** The inner product between simulated distributions and approximated
 118 distributions is shown in blue. By contrast, the inner product between simulated distributions and
 119 other random distributions is shown in orange. **(B)** The mean squared error between the
 120 simulated vectors and approximated vectors is shown in blue. By contrast, the inner product
 121 between the simulated distributions and other random distributions is shown in orange. Note that
 122 a substantial number of random weight vectors have lower mean squared error than the
 123 approximated vectors. This is possible because the noise in the basis distribution set used to
 124 generate the approximated distributions from the approximated vectors is different from the
 125 noise in the basis distribution set used to generate the simulated distributions from the simulated
 126 vectors, so the minimum of inner product between the simulated and approximated distributions
 127 is not always the same as the minimum of the MSE between the simulated and approximated
 128 vectors. **(C)** Another visualization of (B). For each simulated vector, we calculated both an
 129 approximated vector and a random vector. The difference in MSE between the approximated and
 130 random vectors is shown. Negative values correspond to test vectors for which the associated
 131 random vector was a better approximation to the simulated vector than the approximated vector.
 132 **(D)** Blue and orange bars are the same as in (B). Yellow bars correspond to the minimum MSE
 133 among all of the solutions found by gradient descent for a given test vector, indicating that the
 134 inner product minima found by the gradient descent are not in general minima of the MSE. **(E)**
 135 The difference in the inner product between the solutions with the minimum MSE found by
 136 gradient descent, and the solutions with the minimum inner product, as a fraction of the
 137 minimum inner product. The solutions with the minimum MSE discovered by gradient descent
 138 often have inner products several fold higher than the solution with the minimum inner product.

140 **Supplementary Table 1:** List of plasmids used in this study. This list excludes pCMV Tet3G,
 141 which is available commercially from Clontech.
 142

Num	Name	Description	Used in
116v1	pAAV-Ef1a-MCP-dmADARE488Q	Fusion of MS2 coat protein to Drosophila ADAR E488Q, under Ef1a promoter, with WPRE	Supplementary Fig 1B,C
116v5	pAAV-Ef1a-MCP-huADARE488QT490A	As with 116v1, but Human ADAR2 E488QT490A	All figures
116v6	pAAV-Ef1a-MCP-huADART490A	As with 116v1, but Human ADAR2 T490A	Supplementary Fig. 1B,C
133	pcDNA3.1-GAVPO	GAVPO (VIVID transactivator) expressed under the CMV promoter in the pcDNA3.1 backbone.	Fig. 3C-G, Supplementary Fig. 4
147B1	pTRE3G-iRFP-B1-timestamp_A	Timestamp Template A inserted into the 3' UTR of iRFP between a bActin Zipcode element and a WPRE element, in the pTRE3G backbone, with RNA barcode TGC. Also includes a xrRNA element in the 5' UTR.	All figures
148B1	pTRE3G-iRFP-B1-timestamp_B	Same as 147B1, but with RNA Template B.	Supplementary Fig. 1
149B3	pLenti-5xUASG-iRFP-B3-timestamp-A	timestamp Template A inserted into the 3' UTR of iRFP between a bActin Zipcode element and a WPRE element, in a second generation lentiviral backbone with the Vivid promoter, with RNA barcode CTG. Also includes a xrRNA element in the 5' UTR.	Fig. 3C-G, Supplementary Fig. 4
187	pTRE3G-c-fos-iRFP-B3-repRNA-A	Same as 147B1, with the TRE promoter removed and replaced with a c-Fos promoter from pAAV-cFos-EYFP (Addgene 47907), and with RNA barcode CTG.	Supplementary Fig. 5

143

144

Supplementary Table 2: List of oligos used in this study

Name	Description	Sequence
SGR-174B-1	Barcoded RT Primer with 3bp barcode	AATGATACGGCGACCACCGAGATCTACACNNNNNNNNNNNNNNN CCT GCG AGG CCC GCATCTTTCACAAATTTTGTAATCCAGAGG
SGR-174B-2	""	AATGATACGGCGACCACCGAGATCTACACNNNNNNNNNNNNNNN GAG GCG AGG CCC GCATCTTTCACAAATTTTGTAATCCAGAGG
SGR-174B-3	""	AATGATACGGCGACCACCGAGATCTACACNNNNNNNNNNNNNNN TTA GCG AGG CCC GCATCTTTCACAAATTTTGTAATCCAGAGG
SGR-174B-4	""	AATGATACGGCGACCACCGAGATCTACACNNNNNNNNNNNNNNN AGC GCG AGG CCC GCATCTTTCACAAATTTTGTAATCCAGAGG
SGR-174B-5	""	AATGATACGGCGACCACCGAGATCTACACNNNNNNNNNNNNNNN AAT GCG AGG CCC GCATCTTTCACAAATTTTGTAATCCAGAGG
SGR-174B-6	""	AATGATACGGCGACCACCGAGATCTACACNNNNNNNNNNNNNNN CAA GCG AGG CCC GCATCTTTCACAAATTTTGTAATCCAGAGG
SGR-174B-7	Barcoded RT primer with 6 base barcode	AATGATACGGCGACCACCGAGATCTACACNNNNNNNNNNAGTGT CGCG AGG CCC GCATCTTTCACAAATTTTGTAATCCAGAGG
SGR-174B-8	""	AATGATACGGCGACCACCGAGATCTACACNNNNNNNNNNATATCC GGCG AGG CCC GCATCTTTCACAAATTTTGTAATCCAGAGG
SGR-174B-9	""	AATGATACGGCGACCACCGAGATCTACACNNNNNNNNNNCATT GGCG AGG CCC GCATCTTTCACAAATTTTGTAATCCAGAGG
SGR-174B-10	""	AATGATACGGCGACCACCGAGATCTACACNNNNNNNNNNATGCT AGCG AGG CCC GCATCTTTCACAAATTTTGTAATCCAGAGG
SGR-174B-11	""	AATGATACGGCGACCACCGAGATCTACACNNNNNNNNNNCCGTG GGCG AGG CCC GCATCTTTCACAAATTTTGTAATCCAGAGG
SGR-174B-12	""	AATGATACGGCGACCACCGAGATCTACACNNNNNNNNNNATGAG TGCG AGG CCC GCATCTTTCACAAATTTTGTAATCCAGAGG
SGR-174B-13	""	AATGATACGGCGACCACCGAGATCTACACNNNNNNNNNNCGAGC AGCG AGG CCC GCATCTTTCACAAATTTTGTAATCCAGAGG
SGR-174B-14	""	AATGATACGGCGACCACCGAGATCTACACNNNNNNNNNNCGCGG CGCG AGG CCC GCATCTTTCACAAATTTTGTAATCCAGAGG
SGR-174B-15	""	AATGATACGGCGACCACCGAGATCTACACNNNNNNNNNNACTTA TGCG AGG CCC GCATCTTTCACAAATTTTGTAATCCAGAGG
SGR-174B-16	""	AATGATACGGCGACCACCGAGATCTACACNNNNNNNNNNATGCAT GGCG AGG CCC GCATCTTTCACAAATTTTGTAATCCAGAGG
SGR-174B-17	""	AATGATACGGCGACCACCGAGATCTACACNNNNNNNNNNAGTAG GGCG AGG CCC GCATCTTTCACAAATTTTGTAATCCAGAGG
SGR-174B-18	""	AATGATACGGCGACCACCGAGATCTACACNNNNNNNNNNGTTGA CGCG AGG CCC GCATCTTTCACAAATTTTGTAATCCAGAGG
SGR-174B-19	""	AATGATACGGCGACCACCGAGATCTACACNNNNNNNNNNATATCA CGCG AGG CCC GCATCTTTCACAAATTTTGTAATCCAGAGG

SGR-174B-20	""	AATGATACGGCGACCACCGAGATCTACACNNNNNNNNNCCCTA GGCG AGG CCC GCATCTTTCACAAATTTTGTAAATCCAGAGG
SGR-174B-21	""	AATGATACGGCGACCACCGAGATCTACACNNNNNNNNNGCCCG TGCG AGG CCC GCATCTTTCACAAATTTTGTAAATCCAGAGG
SGR-174B-22	""	AATGATACGGCGACCACCGAGATCTACACNNNNNNNNNTTCCC GGCG AGG CCC GCATCTTTCACAAATTTTGTAAATCCAGAGG
SGR-174B-23	""	AATGATACGGCGACCACCGAGATCTACACNNNNNNNNNCATAT AGCG AGG CCC GCATCTTTCACAAATTTTGTAAATCCAGAGG
SGR-174B-24	""	AATGATACGGCGACCACCGAGATCTACACNNNNNNNNNAACGC CGCG AGG CCC GCATCTTTCACAAATTTTGTAAATCCAGAGG
SGR-174B-25	""	AATGATACGGCGACCACCGAGATCTACACNNNNNNNNNAGGTT GGCG AGG CCC GCATCTTTCACAAATTTTGTAAATCCAGAGG
SGR-174B-26	""	AATGATACGGCGACCACCGAGATCTACACNNNNNNNNNTCAAT AGCG AGG CCC GCATCTTTCACAAATTTTGTAAATCCAGAGG
SGR-175	Custom Read 1	GCG AGG CCC GCA TCT TTC ACA AAT TTT GTA ATC CAG AGG
SGR-175-RC	Custom Index 2	CCTCTGGATTACAAAATTTGTGAAAGATGCGGGCCTCGC
SGR-176	Barcoded PCR primer	CAAGCAGAAGACGGCATAACGAGAT ACTGGTCA AAG TTA CTA TCG AAATGCCCTGAGTCCACCCCGG
SGR-176-2	""	CAAGCAGAAGACGGCATAACGAGAT GTGTTCGT AAG TTA CTA TCG AAATGCCCTGAGTCCACCCCGG
SGR-176-3	""	CAAGCAGAAGACGGCATAACGAGAT TAACTGTT AAG TTA CTA TCG AAATGCCCTGAGTCCACCCCGG
SGR-176-4	""	CAAGCAGAAGACGGCATAACGAGAT GATTGGTG AAG TTA CTA TCG AAATGCCCTGAGTCCACCCCGG
SGR-176-5	""	CAAGCAGAAGACGGCATAACGAGAT GGAGAGAG AAG TTA CTA TCG AAATGCCCTGAGTCCACCCCGG
SGR-176-6	""	CAAGCAGAAGACGGCATAACGAGAT TGAGCGAT AAG TTA CTA TCG AAATGCCCTGAGTCCACCCCGG
SGR-176-7	""	CAAGCAGAAGACGGCATAACGAGAT CCTCCGTT AAG TTA CTA TCG AAATGCCCTGAGTCCACCCCGG
SGR-176-8	""	CAAGCAGAAGACGGCATAACGAGAT AACATATT AAG TTA CTA TCG AAATGCCCTGAGTCCACCCCGG
SGR-176-9	""	CAAGCAGAAGACGGCATAACGAGAT CTTACGTA AAG TTA CTA TCG AAATGCCCTGAGTCCACCCCGG
SGR-176-10	""	CAAGCAGAAGACGGCATAACGAGAT TGACGTAG AAG TTA CTA TCG AAATGCCCTGAGTCCACCCCGG
SGR-176-11	""	CAAGCAGAAGACGGCATAACGAGAT CTATGTAT AAG TTA CTA TCG AAATGCCCTGAGTCCACCCCGG
SGR-176-12	""	CAAGCAGAAGACGGCATAACGAGAT TTTGCAGA AAG TTA CTA TCG AAATGCCCTGAGTCCACCCCGG

SGR-176-13	""	CAAGCAGAAGACGGCATAACGAGAT GGTAGCGA AAG TTA CTA TCG AAATGCCCTGAGTCCACCCCGG
SGR-176-14	""	CAAGCAGAAGACGGCATAACGAGAT ACGGGTTT AAG TTA CTA TCG AAATGCCCTGAGTCCACCCCGG
SGR-176-15	""	CAAGCAGAAGACGGCATAACGAGAT TAAACCTC AAG TTA CTA TCG AAATGCCCTGAGTCCACCCCGG
SGR-176-16	""	CAAGCAGAAGACGGCATAACGAGAT GAGAACTG AAG TTA CTA TCG AAATGCCCTGAGTCCACCCCGG
SGR-176-15	""	CAAGCAGAAGACGGCATAACGAGAT GGTTTGAT AAG TTA CTA TCG AAATGCCCTGAGTCCACCCCGG
SGR-176-18	""	CAAGCAGAAGACGGCATAACGAGAT TAGATTAT AAG TTA CTA TCG AAATGCCCTGAGTCCACCCCGG
SGR-176-19	""	CAAGCAGAAGACGGCATAACGAGAT AAGGTTAG AAG TTA CTA TCG AAATGCCCTGAGTCCACCCCGG
SGR-176-20	""	CAAGCAGAAGACGGCATAACGAGAT CCGAAAAT AAG TTA CTA TCG AAATGCCCTGAGTCCACCCCGG
SGR-177	Custom Read 2	AAG TTA CTA TCG AAA TGC CCT GAG TCC ACC CCG G
SGR-177-RC	Custom Index 1	CCGGGGTGGACTCAGGGCATTTCGATAGTAACTT

147

148

149 **Supplementary Table 3:** List of RNA editing templates used in this study.

150

151 The following sequences are the sequences that were analyzed for RNA editing. Notes are supplied as a
 152 courtesy to follow-on studies, and no representations are made as to their accuracy or reproducibility.

	Sequence	Notes
A_Short	AGTACGCGTTAGATTAGATTAGATTAGATTA GATTAGATTAGAAAAATTAATACGTACACC ATCAGGGTACGTCTCAGACACCATCAGGGT CTGTCTGGTACAGCATCAGCGTACCATATAT TTTTTCCAATCCAATCCAATCCAATCCAATC CAATCCAAATAGATCCTAATCA	
A	TTAGATTAGATTAGATTAGATTAGATTAGAT TAGAAAAATTAATATACGTACACCATCAGG GTACGTCATATATTTTTTCCAATCCAATCCA ATCCAATCCAATCCAATCCAATACGCGTTAG ATTAGATTAGATTAGATTAGATTAGATTAGA AAAATTAATACGTACACCATCAGGGTACGT CTCAGACACCATCAGGGTCTGTCTGGTACAG CATCAGCGTACCATATATTTTTTCCAATCCA ATCCAATCCAATCCAATCCAATCCAATAGA TCCTAATCA	
B_Short	AGTACGCGTTAGATTAGATTAGATTAGATTA GATTAGATTAGAAAAATTAATACGTACACC ATCAGGGTACGTCTCAGACACCATCAGGGT CTGTCTGGTACAGCATCAGCGTACCATATAT TTTTTCTAATCTAATCTAATCTAATCTAATCT AATCTAAATAGATCCTAATCA	
B	TTAGATTAGATTAGATTAGATTAGATTAGAT TAGAAAAATTAATATACGTACACCATCAGG GTACGTCATATATTTTTTCTAATCTAATCTAA TCTAATCTAATCTAATCTAAACGCGTTAGAT TAGATTAGATTAGATTAGATTAGATTAGAAA AATTAATACGTACACCATCAGGGTACGTCTC AGACACCATCAGGGTCTGTCTGGTACAGCAT CAGCGTACCATATATTTTTTCTAATCTAATCT AATCTAATCTAATCTAATCTAAATAGATCCT AATCA	
C	AGTACGCGTTAAATTATATTA ACTAAATTAT AGATTAACAAGAATATTA AATACGTACACC ATCAGGGTACGTCTCAGACACCATCAGGGT CTGTCTGGTACAGCATCAGCGTACCTATTTA ATATTCTTGTTAATCTATAATTTAGTTAATAT AATTTAAATAGATCCTAATCA	This template shows significant background editing by endogenous ADAR enzymes, even in the absence of trans-expression of ADAR. It also showed extremely rapid editing on a timescale of single minutes in the presence of blue light,

		when MCP-Cry2 and CIBN-dmADARE488Q were co-expressed.
D	AGTACGCGATTGGTTAATCCCATTGGTTAAT CCCATTGGTTAATCCCTTAATACGTACACCA TCAGGGTACGTCTCAGACACCATCAGGGTCT GTCTGGTACAGCATCAGCGTACCATATATGG GTAAACTGATGGGTAAACTGATGGGTAA ACTGATATAGATCCTAATCA	Editing on this template showed significant sensitivity to the identity of the N-terminal fusion. MCP-ADAR was able to edit this template, whereas other ADAR enzymes, like a CIBN-ADAR fusion, were unable.
E	AGTACGCGAAAAAAAAAAAAAAAAAAAAA AAAAAAAAAAAAAAAAAAAAAAAAACGTAC ACCATCAGGGTACGTCTCAGACACCATCAG GGTCTGTCTGGTACAGCATCAGCGTACCTTT TTTTTTTTTTTTTTTTTTTTTTTTTTTTTTTT TTTTTTTTATAGATCCTAATCA	This template was always severely underrepresented in sequencing, either due to difficulties with expression, amplification, or alignment.